

CCTR-630 GPS Watch Tracker User Manual ---V1

Welcome to use this mini GPS watch tracker. This product is with GPS module and GSM module, that has many new and unique functions, such as super power saving technology, LBS locate technology (without GPS signal), real time uploading current location to server (user can control working mode), check current location or playing back history tracking on website or mobile phone etc. It contains high capacity rechargeable polymer battery (450mAH), standby time can reach 5-7 days (working mode 4), 5 minutes interval upload LBS location working time can reach 3-4days (working mode 3), 5 minutes interval upload GPS location working time can reach 1-2days (working mode 2). This GPS watch is mini size, and easy to use, it is suit for kids, old parents, pets and outdoor workers tracking.

This tracker also have LBS locating function (mobile phone base station CELL ID), if no GPS signal in some place, such as underground park, indoor room, or around high building with bad GPS signal, the tracker will locate with LBS (normally the LBS CELL ID locating precision is about 50-500m in the city, and the GPS locating precision is about 10m).

Using the unique username and password, you can check the history track max to 6-12 months, the real time location, and set the over speed alarm, the geo-fence alarm and so on. The website is www.999gps.net. It is suit for personal user or fleet user, and it can locate object by visiting website, wap visiting by phone, Android App or iOS iPhone App on mobile phone, WeChat on mobile phone (Android,iPhone,Symbian,Windows phone,Blackberry), sending sms to get location Google map link etc.

Scan the following QR code or click the following link can download or read online the manual in Word or Pdf format.

Word Version: <http://www.999gps.org/en/CCTR-630-GPSTracker-en-V1.doc>

Pdf Version: <http://www.999gps.org/en/CCTR-630-GPSTracker-en-V1.pdf>



[QR-Manual Download \(Word\)](#)



[QR-Manual Download \(Pdf\)](#)



[iPhone App Download](#)



[Android App Download](#)



[Wechat Official Account](#)

Product:

CCTR-630 Watch 1 set, Mini USB Charging Wire, Manual (CD or Print), AC Charger (Optional), Water-proof Bag for Pets Belt(Optional).



GPS Watch Tracker



Mini USB Charging Wire



AC Charger (Optional)

Function Specification:

- Portable Design, No installation, Easy using;
- Standby time up to 7 days (working mode 4);
- Listen, SOS, Geo-Fence Alarm;
- SMS/Calling/App/Web/Wechat Locate;
- GPS + LBS can be used indoor locate;
- Universal 4 Band GSM module;
- Auto configure APN;
- Low Battery Alarm.

Display indicator:

Symbol	Description
○	GPS is ON but not located (No symbol means GPS is Off)
⊙	GPS is ON and Located (No symbol means GPS is Off)
▬▬▬	GSM Signal Level (0,1,2,3,4)
✘	No SIM Card
🔋	Battery Power Level (1 to 3)
🔋⚡	Charging
🔋⏻	Watch Power off & Battery is Charging
🔋🔌	Watch Power off & Battery is Full
SOS	Send SOS SMS & Calling SOS number

Before Using:

1. Power On/Off

Power On: If the GPS watch is powered OFF, press and hold the Button ON/OFF over 5 seconds and then the LCD will display "WELCOME", then release the button, and the GPS watch is powered ON.

Power Off: If the GPS watch is powered ON, press and hold the ON/OFF button over 5 seconds and then the LCD will display “BYE BYE”, then release the button ,and the GPS watch is powered OFF.

2. SIM Card Installation(Micro card): This GPS watch need a micro SIM card (every month need about 10M GPRS data according the different working mode, order an data package can save money), Open the back battery cover with finger like the following diagram, pull the battery out, and the SIM card socket can be seen, pull the SIM card metal cover to “OPEN” direction, and the cover can be opened up, and put the SIM card in the holder (Metal pin face to down), close the metal cover and push the metal cover to “LOCK” direction, after a sound of lock the SIM card has been locked and installed.



Note:

A. This GPS watch use 2G GSM network, and it upload tracking only through GPRS, it can not work in CDMA network or 3G(WCDMA or CDMA2000) network. (Some 3G & 4G SIM card can use in 2G GSM network, this kind of 3G & 4G SIM card can use in this tracker)

B. This GPS watch use micro SIM card (Cut the standard SIM card can get Micro SIM Card, this SIM card size is same with iPhone 4/4S, not the iPhone 5/5S/6 Nano SIM Card).

C. Please confirm the PIN code of the SIM card is disabled (insert the SIM card to mobile phone and can be disabled in mobile phone setting menu).

D. Enable the SIM card GPRS data service and Caller ID Function (Some card maybe need using mobile phone to send SMS to service hot line to enable the GPRS data service).

E. Before installing or uninstalling the SIM card, please power off the tracker.

3. Using

This GPS tracker is no installation, wear on the arm or put in the bag and power on is OK, for better hidden, drop in the bag will be better.

4. Recharging

This GPS watch uses the 5V DC voltage to recharge, connect the watch charging micro USB socket to the AC charger or PC USB, the GPS watch will begin to recharge, about 1-2 hours, the battery will be full, press once any button of the GPS watch tracker, the LCD will display the battery level.

5. Low Battery Alarm

When the tracker battery voltage is low than 10%, the watch will send battery low information SMS to the authorized phone number. maybe a few hours later, the watch will turn off after the battery is gone out.

6. Reset to Factory Configure

Send the SMS command to the tracker can reset to the factory configuration. The SMS command is factory#. the tracker will delete all user setting and back to factory configuration and repower on.

Notes: After back to default set, all IP / APN / GPRS / Language / Timezone / Alarm Setting etc are deleted and back to factory setting, just like a new product, all authorized phone number are deleted and password change to 123456, all the alarm setting is canceled, if the IP/APN/GPRS name & password/TIMEZONE are changed, and you need set these again by sending SMS.

7、GPS & GSM Antenna

The Antenna of GSM and GPS are built in the GPS watch.if can not locate please change a place to try again.

8. Using Condition

The working temperature is -20℃ to 60℃, over this range the specification maybe can not reach the standard level. the storage temperature can reach to -40℃ to 80℃.

Simply Using Step

1. First to buy a 2G GSM phone SIM card and enable GPRS service, order a data package (Normally will use about 10M GPRS data every month), install in the tracker, please refer the above **Before Using 2.**

2. Press any ON/OFF button till the watch power on, first time using please put the tracker outdoor for easy get GPS & GSM signal.

3. Please add authorized phone number first, send SMS to tracker to set your mobile phone number as center or slave center number (pw,123456,center,yourphonenumber#) , then you can use your mobile phone to send SMS to change the setting of the tracker or control the tracker. please refer the following **Locate Operation & Setting 1. (Only the center or slave center number can send SMS or call the tracker to change the setting of the tracker or control the tracker)**

4. Send SMS "123#" or "url#" to the tracker with authorized phone, a few minutes later, the watch will reply the tracker location with location description or Google map link by SMS. Please refer the following **Locate Operation & Setting 3 & 4.**

5. Send SMS "lang,0,zone,-5#" to tracker with authorized phone to set your local time, Please refer the following **Locate Operation & Setting 2.**

6. Send SMS "m,4#" to tracker with authorized phone to set change the working mode, Please refer the following **Locate Operation & Setting 11.**

7. Visit & login the tracking platform www.999gps.net, display current location, playback history tracking etc can be operated, platform user name and password is the last 7 digital numbers of the tracker's ID (the ID is print on the battery, for example ID is : 1456301688, and then the user name is : 6301688, password is :6301688, user can change the password).

8. iPhone Android App,Wap,WeChat also use the same user name and password with website login, downloading & installation please refer the platform operation guide.

9. This tracker can auto download & configure APN & GPRS user name & password, if the auto configure

is not right, the tracker can not upload location to server, then you need send SMS to tracker to change the APN & GPRS manually, and send "test#" to tracker can check the tracker setting, call the tracker SIM card supplier to confirm the APN & GPRS is right, please refer **Locate Operation & Setting 16** to set APN & GPRS username and password.

Locate Operation & Setting

Only center or slave center number can send SMS to control or change the setting of the the tracker, the alarm SMS will send to center and slave center number, but the alarm calling only call to center number, so please send SMS to tracker to set the center or slave center number first. Adding country code before the center or slave center number will be better.

1. Add authorized phone number (Set center and slave center number)

Send SMS "pw,123456,center,13987654321#" to the tracker to set center number, Send SMS "pw,123456,slave,13912345678#" to the tracker to set slave center number,123456 is the tracker default password, 13987654321 and 13912345678 are the mobile phone number, the tracker will reply set center or slave number OK. If the tracker has no reply, please check the tracker work properly and confirm the SMS command is right. Set new center or slave center number will overwrite the old center or slave center number.

Send SMS "pw,123456,center,d#" or "pw,123456,slave,d#" to the tracker can delete the old center or slave center number.

The center or slave center number all can control the tracker, but the alarm information only can be sent to the center number by SMS or calling.

2. Set the local time zone

Send SMS "lang,0,zone,z#" to the tracker with authorized number (center or slave center number), the "z" is the customer local time zone, for example NewYork time zone is -5, then z is -5, Tokyo time zone is +9,so the z is 9, the watch time is corrected by GPS time, so normally the watch display time is GMT time, you need set the time zone, and then the watch display time will change to your local time.

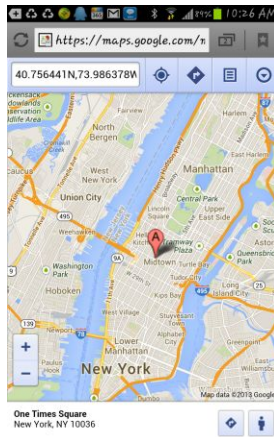
3. Sending SMS to Locate with Google map link

Send SMS "url#" to the tracker with authorized number (center or slave center number), the tracker will reply a google link of current location to user by SMS, user click the link to visit website, the current location will display on the google map. If the tracker has no reply, please check the tracker work properly and confirm the SMS command is right.

The "url#" command will reply the following SMS:

<http://maps.google.com/maps?q=N22.6775,E114.1518>

Click the above link, the map like following will display on mobile phone.



4. Sending SMS to Locate with location description in text:

Send SMS “123#” to the tracker with authorized number (center or slave center number), the tracker will reply text description of current location to user by SMS, If the tracker has no reply, please check the tracker work properly and confirm the SMS command is right.

The “123#” command will reply the following SMS:



Some time the location description can not get, then the watch will change to reply location Google map link like above.

5. LBS Locate (Cell ID Locate without GPS Signal)

When send SMS “123#” or “url#” to the tracker with authorized number (center or slave center number) to trigger the tracker to locate , if the tracker is indoor and has not GPS signal, the tracker will change to locate with LBS method (locate with GSM network base location), and reply the location with Google map link, the following SMS is an example.

url: [No Locate]

<http://maps.google.com/maps?q=N40.756441,W73.986378>

Note: The LBS location precision is not very high, in the city maybe 30-50 meters, in country side maybe over 300 meters according the GSM base station density. So this location only can be used as a reference location.

6. Set Listen & Monitor Phone Number

Send SMS "monitor,13712345678#" to the tracker with authorized number (center or slave center number) , the tracker will set 13712345678 this number as listen monitor number, only use this number call the watch tracker, the watch will pick up the calling and go to the listen monitor mode, in this mode, you can listen the sound around the watch tracker, but the watch tracker has not any response. Hang up the calling, the listen monitor mode will terminate.

Note: Only listen monitor number calling can trigger the watch tracker go to the listen monitor mode, set the new listen monitor number will overwrite the old the listen monitor number.

7. Listen & Monitor Sound

Making a call to watch tracker number with listen monitor number, the watch will pick up the calling and then you can listen the sound around the watch tracker, the watch tracker has not any response. Hang up the calling, the listen monitor mode will terminate.

Note: Set the listen monitor number first, and the SIM card in the watch tracker need enable caller ID display function.

8. Set SOS phone number

Send SMS "sos1,+8613612345678#" or "sos2,+8613512345678#" or "sos3,+8613412345678#" to the tracker to set SOS alarm phone number, 13612345678 or 13512345678 or 13412345678 are the SOS phone number, total 3 SOS numbers can be set, the tracker will reply set sos(1,2,3) number OK. If the tracker has no reply, please check the tracker work properly and confirm the SMS command is right.

Set new SOS number will overwrite the old SOS number. Also send SMS "sos1#" or "sos2#" or "sos3#" to the tracker can delete the old SOS number.

9. Press SOS Button to Send SOS Information

Press SOS button over 6 seconds till the LCD display "SOS", release the SOS button, the watch tracker will send SOS information SMS to the SOS1, SOS2 and SOS3 number, and then call the SOS1, if the SOS1 no response, then call the SOS2, and also if no response call SOS3, If all SOS number no response then stop the calling. If the calling is picked up by the SOS number, then the watch will go to listen monitor mode, the SOS number can listen the sound around the tracker.

If the SOS number receive SOS information, please confirm people is safety.

10. Change Watch Tracker Password

Send SMS "pw,112233#" to the tracker with authorized number (center or slave center number), the "112233" is an sample of the new password of the watch tracker, this command will change the tracker password to new password 112233, the tracker will reply "Password 112233 set success!", If the tracker has no reply, please check the tracker work properly and confirm the SMS command is right.

Note: the tracker password (Default password is 123456) is not the password login the tracking platform,

this password is used to add authorized number by SMS, for better security please change the tracker password after begin to use the watch tracker.

11. Change Watch Tracker Working Mode

This watch tracker has 4 working mode, default working mode is 2, sending SMS to watch tracker can change the working mode, the working mode description as follow:

1. Mode 1 (Real Time Mode): GPS and GSM module will work continuously, tracker will upload the location to server according the interval time setting, under this mode, the battery exhaust will be very fast (30 seconds upload 1 location the battery only can be used 2-3 hours). and the location update on App & Web maybe have 30 seconds delay (The delay time is decide by setting time interval).

Send SMS "m1,60#" to the tracker with authorized number (center or slave center number), the "60" is the upload time interval (min is 30 & max is 65535), unit is seconds, this command will set the watch tracker working mode is mode 1, and the upload time interval is 60 seconds.

2. Mode 2 (Power Saving Mode): **This working mode is default working mode**, under this mode, GPS will turn on & locate every 300 seconds (5 minutes), after located upload the location to the sever, and then turn off the GPS & GPRS, under this mode, the battery can be used longer (1-2 days). and the location update on App & Web maybe have 300 seconds delay (The delay time is decide by setting time interval).

Send SMS "m2,600#" to the tracker with authorized number (center or slave center number), the "600" is the upload time interval (min is 300 & max is 65535), unit is seconds, this command will set the watch tracker working mode is mode 2, and the upload time interval is 600 seconds.

3. Mode 3 (LBS Locate Mode): Under this mode, watch tracker will not turn on GPS to locate, it only use LBS (Mobile phone base station locate technology) to locate tracker every 300 seconds (Can be changed), after located upload the location to the sever, under this mode, the battery can be used more longer (3-4 days). and the location update on App & Web maybe have 300 seconds delay (The delay time is decide by setting time interval), and the location precision is not very high (City maybe 30-50 meters, and country side maybe over a few hundreds meters), but the tracker can be confirmed around a area. In this working mode the GPS module is turned off all the time, but sending SMS (123# & url#) can triggered the tracker turn on the GPS to locate one time.

Send SMS "m3,300#" to the tracker with authorized number (center or slave center number), the "600" is the upload time interval (min is 30 & max is 65535), unit is seconds, this command will set the watch tracker working mode is mode 3, and the upload time interval is 300 seconds.

4. Mode 4 (Standby Mode): Under this mode, watch tracker will not use GPS or LBS to locate, it only can be located by SMS (123# or url#), no platform necessary, and it will not upload location to server, under this mode, the battery can be used more & more longer (5-7 days). and the location update on App & Web will not updated. In this working mode the GPS module is turned off all the time, but sending SMS

(123# & url#) can triggered the tracker turn on the GPS to locate one time.

Send SMS "m4#" to the tracker with authorized number (center or slave center number), this command will set the watch tracker working mode is mode 4.

12. Set the Upload Time Interval

Send SMS "upload,60#" to the tracker with authorized number (center or slave center number), the "60" is an sample of the upload time interval (min is 30 & max is 65535,mode 2 min is 300), unit is seconds, this command will change the tracker upload time interval, the tracker will reply "Set upload 300s !", If the tracker has no reply, please check the tracker work properly and confirm the SMS command is right.

13. Set LCD Display Time

Send SMS "displaytime,5#" to the tracker with authorized number (center or slave center number), the "5" is an sample of the LCD display time, unit is seconds, this command will change the watch display time, the tracker will reply "Set display time 5s !", If the tracker has no reply, please check the tracker work properly and confirm the SMS command is right.

Every pressing the button ON/OFF or SOS, the watch LCD will display time a while and then turn off the LCD to save battery power, too long display time will reduce the battery working time.

14. Set Sleep Time to Save Battery Power

Send SMS "sleep,x,y#" to the tracker with authorized number (center or slave center number), the "x" is the time tracker begin to go to sleep, and the "y" is the time tracker stop sleep and weak up from sleep, the format is HH (24 hours), if the y is smaller than x, it means the weak time is the second day, for example, sending SMS "sleep,22,8" to tracker, the tracker will begin to sleep from 22:00 o'clock, and weak up from 08:00 o'clock, the tracker will reply "Set sleep 22,8 ", If the tracker has no reply, please check the tracker work properly and confirm the SMS command is right.

Set sleep time can extend the battery time, for example set the sleep time from 22:00 to 08:00 can extend the battery time even up to 50%.

15. Low Battery Alarm

The battery power has 4 levels, when the battery power reach to level 1, the watch will send a battery low alarm information SMS to center number, if the battery power is too low, the watch will turn off automatically.

16. Set APN & GPRS Username and Password

This watch tracker can auto download the APN & GPRS setting according the SIM card, if the auto configure of the APN & GPRS are not right, you can send SMS to watch to set the the APN & GPRS.

Send SMS "apn,xxx#" or "apn,xxx,plmn,yyy#" or "apn,xxx,user,uuu,pd,ppp,plmn,yyy,#" to the tracker with authorized number (center or slave center number), the xxx is apn name, yyy is the tracker SIM card mobile company code, uuu is GPRS user name, ppp is GPRS password, if you can not confirm this, please search on internet or call your tracker SIM card mobile company to confirm.

Some SIM card need GPRS user name & password, some SIM card do not need, please call the SIM card

supplier to confirm. If sending SMS can locate, but the location can not check on the app or web, please confirm the APN setting is right.

17. Check Watch Current Setting

Send SMS “test#” to the tracker with authorized number (center or slave center number), the tracker will reply current setting to user by SMS, this command can be used to check the watch working status, and to adjust the watch is working well or not. The following is an example:

```
ver:TQ-v0.1-2014/09/28-22:51;ID:1456301688;ip:58.64.155.133;port:8500;center:13987654321;slave:13876543210;upload:300s;work mode:1;bat level:3;signal level:100; GPS:OK(7); GPRS:OK(100); LED:OFF;
```

Ver: Software version time

ID: Tracker ID number

Ip,port: Platform IP & port

Center: Cneter number

Slave: Slave number

Upload: Upload time interval

Workmode: Working mode

Bat level: Battery Level

Signal level:100: GSM signal level

GPS: Satellite number

GPRS: GPRS signal level

LED: LED ON or OFF

18. Reset Watch Tracker

Send SMS “reset#” to the tracker with authorized number (center or slave center number), the tracker will power off and power on again, some time the tracker can not online, send the reset command, the tracker will re-power on a few minutes later.

19. Restore to Factory Setting (Back to Default)

Send SMS “factory#” to the tracker with authorized number (center or slave center number), the tracker will delete all user setting, and restore all setting to factory mode, just like a new tracker, and the tracker will repower on after delete user setting. If the user have changed the setting, such as APN, IP, center number, etc, you need set this again after back to factory mode

20. Upgrade Firmware

Send SMS “upgrade,address#” to the tracker with authorized number (center or slave center number), address is the internet address of the new software, the tracker will upgrade the firmware with the internet software, after the upgrading, all the user setting will be deleted, this command is used to upgrade future function for special user.

Platform Operation

The platform operation please refer the platform operation guide, scan the following QR code or click the website link to download the platform manual, visit website www.999gps.net and click the Manual icon also can

download the platform manual.



[Platform User Guide Word Version](#)



[Platform User Guide Word Version](#)

Trouble Shooting

1. Please confirm that the SIM card PIN code has been disabled, it means if mobile phone use this SIM card, it is not necessary to input any password.
2. This tracker use 2G GSM network, and it upload tracking only through 2G GPRS, some 3G & 4G card have 2G GSM network, this kind of SIM card can be used in this tracker.
3. The tracking data on our server will keep 6-12 months, the old data will be deleted.
4. After power on the watch, call the watch, no response, and no ring, please confirm the SIM card has been installed properly, and the SIM card has enough charge, and the mobile phone can work well in that place.
5. If the watch can not upload location to website, please confirm the SIM card GPRS function is enabled, and the APN or GPRS username & password have been set properly (call the mobile phone to confirm the APN & GPRS username and password).
6. If the watch can not send back information by SMS, please confirm the SIM card has ID caller display function and SMS service function, and you have set the center or slave center number (only center or slave center number can send SMS), and please read the SMS information of the tracker sending back, and check the instruction & password is right or not.
7. Can not login the platform: use SMS to check the ID of the tracker, and try it again, if not success please contact distributor.
8. After go out the under ground park, some tracking maybe lost, the GSM and GPS module will take a few minutes to receive signal and re-locate, some tracking maybe lost, this is normal.
9. Some time some location point is lost, this is normal, in the transmit process, some point

maybe is lost, but this will not happen very often.

Specification:

GSM Module	MTK	GPS Module	MTK
GSM Frequency	850/900/1800/1900Mhz (4 Band)	GPS channel	24 channels
GSM / GPS Antenna	Built in	Locate precision	10-20 Meters
GPS Cold Start Time	36 seconds	GPS Hot Start Time	1 second
Working Voltage	5V DC	Recharging Current	< 5V/400mA
Standby Current	< 10 mA	Uploading Current	<150mA / 5V
Battery	450mAh	Working Temperature	-20 °C to +55 °C
Absolute Temperature	-35 °C to +70 °C	Storage Temperature	-40 °C to +80 °C

Warranty

This system has been tested before sold. We strongly recommend you to get this system installed by professional. There is a one-year warranty except the following condition:

1. Installed, fixed, or changed by personally or unprofessional.
2. Warranty will eliminate if the ownership of the tracker has been changed.
3. Parts damaged by man-made.
4. Battery, adapter, wires, etc.

Warning: this device is just a auxiliary product that applying the location of current object, we have not any responsibility if you have damage or lost in using this tracker.

Customer			
User Mobile Phone		Tracker SIM card	
Date	Year	month	day
Model	CCTR-630	Serial Number	
Distributor			

Notes: The explanation of this manual is belonged to our company, some small changes may not notice customer, if you have any problem please contact us, thanks !