

## CCTR-830G 3G GPS Tracker Using Guide--201608

Welcome to use this OBD 3G GPS tracker CCTR-830G, This product is with GPS & GSM / WCDMA module and OBD II interface (Support Can Protocol: ISO15765-4, KWP2000:ISO14230-4, ISO9141-2, J1850VPW, J1850PWM), it can upload current location to website, display history tracking on website, it has Google map link locate function without platform, it is very easy to install and using, just insert the tracker to car OBD socket is OK, also it built in shock sensor to control power & internet data saving.

With GPS and GSM & WCDMA network, the tracker sends the present location information through GPRS to internet server, so that user visit the website [www.999gps.net](http://www.999gps.net) with the applied user's name and password (Given by us) through any computer with available internet, current location checking, history tracking playing back, alarm & running report etc can be operated, it is used for alarm, fleet management, anti-hijack etc.

User can download Android or iPhone iOS app software to android or iPhone mobile phone, click the app, logon with user name and password, you can locate current location & display history tracking, the user name and password is same with the website login. Also following 999GPS official account on WeChat software, map or text description location can be send back by WeChat. Basically using mobile phone send SMS or call the tracker can get the SMS of the current location Google map link.

Also this tracker can diagnostic car status by SMS (Reply DTC information & car status read from OBDII interface), this can help user or maintenance worker to know the car status and how to fix it.

This GPS tracker can be used as car alarm, fleet management, driver management etc, it can be used for tracking cars, company vehicles, buses, taxis, trucks, etc.



[iPhone App Download QR Code](#)



[Android App Download QR Code](#)



[Manual\(Word\) Download QR Code](#)



[Manual\(Pdf\) Download QR Code](#)

## Packing list



## Specification

- OBD interface, DIY no installation;
- Diagnostic Car Status(reply by SMS);
- Auto download & config APN & GPRS setting;
- Listen sound around tracker;
- App (Android & iPhone) / WeChat / Web / SMS / Wap locate;
- Built in Shock Sensor for Car Move and Shock Alarm;
- Shock sensor control uploading to save car battery power;
- Cell ID locate when no GPS (Indoor or underground);
- Universal GSM / WCDMA Band for Global network;
- Wide working voltage: 9-45V DC;

## LED indicator

GREEN LED Flash once	: GSM & GPS working well
GREEN LED Flash twice	: GSM working well and no GPS signal
GREEN LED Flash three times	: GSM & GPS working well but battery low
GREEN LED Flash four times	: GSM working well, battery low and no GPS signal
GREEN LED ON continuously	: GSM searching network
GREEN LED OFF continuously	: Power off
GREEN LED Flash fast	: incoming a call or sending SMS
RED LED Flash once	: uploading current tracking
RED LED Flash twice	: can not upload tracking now

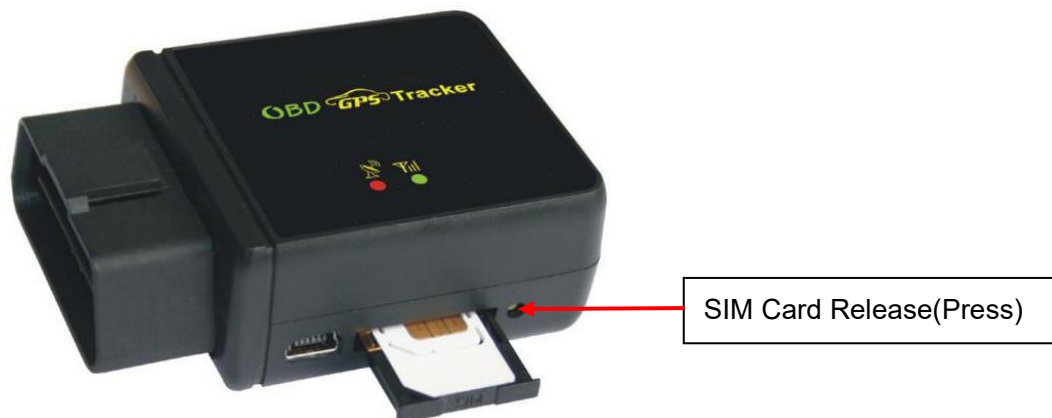
## Before Using

### 1. Power ON / OFF

- ◆ Insert the tracker to OBD socket, the tracker will power on automatically.
- ◆ When power is ON, pull the tracker from the OBD socket, then the tracker will power off automatically.

### 2. Install SIM card

Press the yellow switch button beside the tracker with a tool, the SIM card holder will come out. Pull it out and put the SIM card in the holder and then push the holder into the tracker again is OK (Pay attention to that the SIM card metal contact pin can not face down to the holder).



### **Sim Card Metal Pin Face to Up**

- Note: 1. This tracker use 2G GSM 3G WCDMA network, and it upload information by internet, it can not work in CDMA network or CDMA2000 network. (Some 4G SIM card can use in 3G WCDMA or 2G GSM network, this kind of 4G SIM card can be used in this tracker)
2. Please confirm the PIN code of the SIM card is disabled (insert the SIM card to mobile phone and can be disabled in mobile phone setting menu).
3. Before installing or uninstalling the SIM card, please power off the tracker.

### **3. ANTENNA**

- ◆ The Antenna of GSM and GPS are built in the tracker.
- ◆ Big metal and car panel will reduce the GSM and GPS signal. the GPS antenna need faced to heaven, otherwise the GPS signal will be weak and maybe can not located, if can not locate insert to OBD interface, you need connect a OBD wire to install the tracker to other place .

### **4. Using Condition**

The working temperature is -20 °C to 60 °C, over this range the specification maybe can not reach the standard level, the storage temperature can reach to -40 °C to 80 °C.

### **5. Back to factory setting (Default configuration)**

Sending SMS (factory\*123456) to the tracker will delete all user setting and back to factory configuration and repower on.

**Notes: After back to default set, all IP / APN / GPRS / Language / Timezone / Alarm Setting etc are deleted and back to factory setting, just like a new product, all authorized phone number are deleted and password change to 123456, all the alarm setting is canceled, if the IP/APN/GPRS name & password/TIMEZONE are changed, and you need set these again by**

**sending SMS.**

## How to Install

1. First to buy a 2G GSM or 3G WCDMA mobile phone SIM card, which needs SMS service and incoming caller ID display and GPRS function, and please disable the PIN code of the SIM card, this SIM card phone number is the tracker number and all the operations (calling and sending SMS) to the tracker is this number.

2. Insert the tracker to the OBD socket is OK, it is not necessary to do any other installation, all cars later from year 2000 have OBDII interface, the OBD socket normally is under the car panel, if you can not find the OBD socket, check your car manual to find or call your car manufacturer hot line to confirm the OBD.

3. After insert the tracker to OBD socket, the tracker will power on automatically, the tracker uploading is controlled by shock sensor, if the tracker begin to move, the tracker begin upload the tracking, the tracker status on the platform will change to online immediately. if the tracker stop moving, the tracker will stop upload the tracking and turn off GPS & GPRS to go to sleep, a few minutes later the tracker status on the platform also will change to offline. If you like to keep the tracker always online, send SMS (keeponline\*123456) to change the tracker working method is OK, but this will exhaust more data charge and car battery power, and if the car will park long time or the car battery is old, this maybe cause the car battery power low and can not start car engine.

## How to Use

After install SIM card and insert the tracker to OBD socket, you can send SMS to locate and change tracker setting, the tracker use password(default is 123456) to control, every SMS command need add password, if you have set authorized number, some command don't need add password,for better security please change the default password before using.

1. After installation the tracker, park the car in the open place (indoor or underground can not receive the GPS signal), send SMS (LOCATE\*123456) to the tracker number, the tracker will reply SMS with Google map link , click the link to visit internet, the map will display on your mobile phone. This means the GPS and GSM is working.

2. Upload the tracking to internet server through GPRS, this tracker can auto download & config the GPRS & APN setting, if the APN or GPRS user name & password are not right, you can set APN

and GPRS username & password sending SMS, you can check the APN & GPRS username password by sending SMS "CHECK\*123456" to tracker, Sending SMS "APN\*123456\*apnname" to the tracker can set the APN, and sending SMS "USERNAME\*123456\*username\*password" to the tracker can set the GPRS username & password, please see the following setting description for detail.

4. Visit the website [www.999gps.net](http://www.999gps.net), logon with given user nam and password (user name is the last 7 digital number of the tracker's ID number, the default password is same with user name, for example ID is 830201512345678, the default logon name and password all are 2345678, the ID is print on the label on the back of the device, user can change the password and user information after logon, but can not change the user name, our administrator or dealer can change the user name by user request (ask your dealer to contact us), After logon, click the car you want check, the current location will display on the Google map, check the date and time and location is right or not, if it is correct, then you have installed the tracker and set the tracker properly, and it work well.

5. The iPhone and Android App locate please see the platform using guide, and also Wechat locate please see the platform using guide.

6. If you have many vehicles , we can create a user that can see all your trackers after you login, this can be used as fleet management, ask your dealer to contact us to get your administrator user name and password of your fleet.

7. The data & time of the tracker upload to the website is GMT time (Greenwich Mean Time, add or minus a fixed digit is your local time), you can change the display time to your local time by setting the time zone to your local time zone in the menu of My Account after logon the platform ( For example Newyork time zone is -05), please refer the platform operation guide.

## Setting Instruction

### 1. Check Tracker ID:

The tracker ID is print on the label of the tracker, the S/N number on the label is the ID, Also if the label is missing, send SMS "ID\*123456" to tracker, in which, "ID" is the fixed command and "123456" is the password. Having successfully been made, there will be a SMS "ID: 830201512345678", in which, "830201512345678" is the ID and every tracker corresponds to the only number. This number is used to differ the tracking uploaded to the website from others. the last 7 digital number of the tracker ID is the user name and password of the tracker on the platform, for example the tracker ID is :

830201512345678, and then the user name on the platform of this tracker is : 2345678, and the platform password for this user name also is :2345678,user can login the platform to change the password.

## **2. Set Server IP**

Send SMS "IP\*123456\*58.64.155.133,8011" to the tracker, in which, "IP" is the fixed command, "123456" is the password and "58.64.155.133,8011" is the IP address of the server computer of our website. Having successfully been set, there will be a SMS "IP: 58.64.155.133,8011". However, the IP address may be changed with the upgrade of our server, so please see to the notices on our website.

**Notice:** The tracker IP address has been set to default : 58.64.155.133,8011 in factory, it is not necessary to set again, unless our IP address has been changed or user need upload the location to other server, If our server IP is changed, we will notice on the website.

## **3. Set APN**

This tracker can download & config APN & GPRS username password automatically after power on, if the APN & GPRS user name password are not right, then you need sending SMS to tracker to change them, if the tracker can not upload location to platform (Red LED flash twice), please confirm the auto configuration of APN & GPRS user name password is right, the APN name and GPRS user name & password please call your tracker SIM card mobile phone company to confirm, the auto configuration APN & GPRS of the tracker please sending SMS "CHECK\*123456" to tracker to check. if the APN & GPRS are not right, please set by the following description.

Send SMS "APN\*123456\*apnname" to the tracker, in which, "APN" is the fixed command, "123456" is the password and "apnname" is the APN name of a mobile phone company. Having successfully been made, there will be a SMS "APN: apnname".

Send SMS "USERNAME\*123456\*username\*password" to the tracker, "USERNAME" is a command, "123456" is the password of the tracker; "username" is the mobile company GPRS user name, "password" is the mobile company GPRS password, if the operation is success, the tracker will send back the information "Username:username, Password:password", if the password is not right, the operation is fault, the tracker will send back information "Wrong Password".

## **4. Add / Delete / Check Authorized Number:**

The authorized phone number is used to send alarm information by SMS, or use mobile phone to locate the tracker without platform, if the authorized phone number is not set, then the alarm information can not send to user by SMS (alarm information, SOS, etc).

#### **4.1. Add authorized phone number by SMS**

Send SMS "ADDPHONE\*123456\*A\*number"(Not including the quotation marks " ", Number means the telephone number you want authorized, the following is same) to tracker is OK, "ADDPHONE" is a command; "123456" is password; "A" is authorized number location, every tracker have 3 authorized phone number, A and B, and C, so you can set 3 phone numbers, if the add operation is success, the tracker will send back the information "Add Authorized Phone OK", if the password is not right, the operation is fault, the tracker will send back information "Wrong Password".

#### **4.2. Delete authorized phone number by SMS**

Send SMS "DELETEPHONE\*123456\*A" to the tracker, "DELETEPHONE" is a command; "123456" is password; "A" is authorized phone number location, there are 3 locations "A" and "B" and "C"; if the delete operation is success, the tracker will send back the information "Delete Authorized Phone OK", if the password is not right, the operation is fault, the tracker will send back information "Wrong Password".

#### **4.3. Check authorized phone number by SMS**

Send SMS "CHECKPHONE\*123456" to tracker, "CHECKPHONE" is a command; "123456" is password; if the operation is success, the tracker will send back the information "Authorized Phone A: 13987654321; B: 13876543210; C: 13765432101", the phone number is just an example. if the password is not right, the operation is fault, the tracker will send back information or "Wrong Password".

### **5. Change / Check Password**

#### **5.1. Change tracker password**

Send SMS "CHANGEPASSWORD\*123456\*888888" to tracker, "CHANGEPASSWORD" is a command; "123456" is old password; "888888" is new password; if the operation is success, the tracker will send the information "New Password: 888888" to every authorized phone number, if the password is not right, the operation is fault, the tracker will send back information "Wrong Password".

Note: Only authorized phone can change the password.

#### **5.2. Check tracker password**

Send SMS "CHECKPASSWORD" to the tracker, "CHECKPASSWORD" is a command, if the operation is success, the tracker will send back the information "Password: 888888"; "888888" is an example.

Note: Only authorized phone can check or change the password.

### **6. Set Alarm by Calling: ON/OFF**

Send SMS "CALLON\*123456" (Call to authorized number) or "CALLOFF\*123456" (No calling) to the tracker, "CALLON" or "CALLOFF" is a command, "123456" is the tracker password, if the operation is success, the tracker will send back the information "Alarm by calling : ON" or "Alarm by calling :OFF", if the password is not right, the operation is fault, the tracker will send back information "Wrong Password". If the alarm by calling is ON, then when the alarm is triggered, the tracker will call the authorized number to notice the alarm, the default setting is ON.

#### **7. Set Alarm by SMS: ON/OFF**

Send SMS "SMSON\*123456" (Sending SMS to authorized number) or "SMSOFF\*123456" (No SMS) to the tracker, "SMSON" or "SMSOFF" is a command, "123456" is the tracker password, if the operation is success, the tracker will send back the information "Alarm by SMS : ON" or "Alarm by SMS :OFF", if the password is not right, the operation is fault, the tracker will send back information "Wrong Password". If the alarm by SMS is ON, then when the alarm is triggered, the tracker will send SMS to the authorized number to notice the alarm.the default setting is ON.

#### **8. Set GPRS Mode: KEEPONLINE / SHOCKCONTROL**

Send SMS "KEEPONLINE\*123456" (Keep online all the time even the tracker stop moving) or "SHOCKCONTROLGPRS\*123456" (Turn off GPRS after the tracker stop moving 2 minutes) to the tracker, "KEEPONLINE" or "SHOCKCONTROLGPRS" is a command, "123456" is the tracker password, if the operation is success, the tracker will send back the information "GPRS: Keep Online" or "GPRS: Shock Control", if the password is not right, the operation is fault, the tracker will send back information "Wrong Password". the default setting is Shock Control, when the tracker begin to move, the tracker begin upload the tracking, the tracker status on the platform will change to online immediately. if the tracker stop moving, the tracker will stop upload the tracking and turn off GPS & GPRS to go to sleep mode , a few minutes later the tracker status on the platform also will change to offline.

If the tracker is always online, the tracker will send tracker status to platform all the time, but this will exhaust more data charge and car battery power, and if the car will park long time or the car battery is old, this maybe cause the car battery power low and can not start car engine, we do not recommend this working mode.

#### **9. Set GPS Mode: GPSON / SHOCKCONTROL**

Send SMS "GPSON\*123456" (GPS module Keep ON all the time even the tracker stop moving) or "SHOCKCONTROLGPS\*123456" (Turn off GPS after the tracker stop moving 2 minutes) to the tracker, "GPSON" or "SHOCKCONTROLGPS" is a command, "123456" is the tracker password, if the operation



is success, the tracker will send back the information "GPS: Keep ON" or "GPS: Shock Control", if the password is not right, the operation is fault, the tracker will send back information "Wrong Password". the default setting is Shock Control, when the tracker begin to move, the tracker turn on GPS, if the tracker stop moving, the tracker will turn off GPS to save car battery power.

The GPS module keep ON can get better signal and can locate very fast, but this will exhaust more car battery power, and if the car will park long time or the car battery is old, this maybe cause the car battery power low and can not start car engine, we do not recommend this working mode.

#### **10. Set Upload Time Interval**

Send SMS "INTERVAL\*123456\*xxx" to tracker, "INTERVAL" is a command, "123456" is password, "xxx" is the interval time, which can be set from 30 to 999 seconds. The tracker will send back information "Set Interval xxx OK", if the password is not right, the operation is fault, the tracker will send back information "Wrong Password". 30 seconds is the default interval time. Longer upload interval time can save battery and GPRS data cost, but this will make the total mileage to more error.

#### **11. Set Car Plate Name**

Send SMS "PLATE\*123456\*PlateName" to tracker, "PLATE" is a command, "123456" is password, "PlateName" is the car plate number or name, after setting the car plate, the reply to tracker SMS will add car plate to indicate which car reply this message. The tracker will send back information "Car Plate: PlateName", if the password is not right, the operation is fault, the tracker will send back information "Wrong Password".

#### **12. Check Car OBD Information**

Send SMS "OBD\*123456" to tracker, "OBD" is a command, "123456" is password, the tracker will send back OBD & car status information", if the password is not right, the operation is fault, the tracker will send back information "Wrong Password".

OBD information example: (The information maybe different with car model)

Number of DTCs:1,P0340,Car voltage:13V

The detail information of the DTC please see the car owner book, the different model car has different DTC, the 4S or fixing factory can diagnostic your car by mobile phone.

#### **13. Check tracker setting**

Send SMS "CHECK\*123456" to tracker, "CHECK" is the fixed command, "123456" is password. The tracker will send back information including software version, ID S/N number, IP address, authorized phone number, GPS and GSM signal etc. if the password is not right, the operation is fault,

the tracker will send back information "Wrong Password". The following is an example :

V Mar 03 2014,TQ,CC0830C00820800,58.64.155.133,8011,30,A:13987654321,  
B:13876543210, GPS OK,+00,ShockControlGPS,-95dBm,ShockControlGPRS,  
CMNET,User,Password,46000,e1d/24a0,93%

V Mar 03 2014,	;Software version date
CC830,	;TCP/IP Protocol name
CC0830C00820800,	;ID S/N number
58.64.155.133,8011,	;Server IP and Port
13987654321,	;Authorized number (A/B/C)
GPS OK ,	;GPS status
+00,	;Time Zone (00 means GMT time)
ShockControlGPS,	;GPS module shock control
-95dBm,	;GSM signal strength
ShockControlGPRS,	;GPRS is controlled by shock sensor
CMNET,	;APN name
User,	;GPRS user name
Password,	;GPRS password
46000,	;Sim Card MCC+MNC
e1d/24a0,	;Current Cell ID

**Note:** This command usually be used to check the tracker current status & configuration, if the tracker can not work well, this command can check what the problem is.

#### **14. Re-power on tracker**

Send SMS "RESET\*123456" to tracker can make the tracker power off and power on again, "RESET" is the fixed command, "123456" is password. The tracker will send back information "Cancel all alarm setting and re-power on", then the tracker will power off and power on automatically, if the password is not right, the operation is fault, the tracker will send back information "Wrong Password". some time the tracker can not work properly, send the reset command, the tracker will re-power on a few minutes later.

#### **15. Restore to factory setting (Back to Default)**

Send SMS "FACTORY\*123456" to tracker can make the tracker power off and power on again, "FACTORY" is the fixed command, "123456" is password. The tracker will send back information "Setting back to factory default", then the tracker will delete all user setting, and restore all setting to factory mode, just like a new tracker, then the tracker will re-power on after delete user setting. If the

user have changed the setting, such as APN, IP, authorized number, etc, you need set this again after back to factory mode. if the password is not right, the operation is fault, the tracker will send back information "Wrong Password".

## Locate Operation Instruction

### 1. Calling trigger locating by text description location

Using authorized phone call the tracker, after ring 3 times, the tracker will hang up the call automatically and locate immediately, a few seconds later, the tracker will send back the location information with text description by SMS to the caller. If the tracker has not authorized number, any phone calling can trigger the tracker to locate immediately, if the tracker has authorized number, then only authorized phone calling can trigger the tracker to locate immediately.

The SMS information sample is as follow:



Send SMS "LOCATE\*123456" to the tracker, "LOCATE" is a command, "123456" is password. If the operation is success, the tracker will send back the information as above.

If the authorized number have been set, use the authorized phone number to send SMS "123#" to the tracker also can trigger the tracker locate and reply the location with text description.

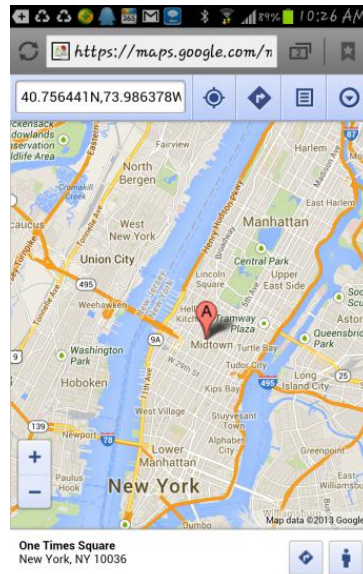
If the tracker can not get the location in text description, it will reply the location with Google map link as follow.

### 2. Sending SMS trigger locating by Google map link

Send SMS "URL\*123456" to the tracker, "URL" is a command, "123456" is password. If the operation is success, the tracker will send back the location information with Google map link to the sender. User click the link, the location in google map will display, the SMS example is as follow:

<https://maps.google.com/maps?q=22.67680N,114.15188E>

Battery:88%



### 3. Cell ID Locate with Google map link

After sending SMS or calling the tracker to trigger locate, if the tracker can not receive GPS signal or GPS signal weak (underground park or indoor etc), the tracker will change to Cell ID locate, and reply a location with Google map link to the caller or sender. User click the link, the location in google map will display like above, the SMS example is as follow:

No GPS signal, Just Cell ID Location:

<http://maps.google.com/maps?q=N22.6775,E114.1518>

**Note:** this location is locate by GSM base station ID, the precision is not very high, in the city maybe 30-50 meters, in the country mabe over 1 km, so the location is only used for reference.

If the cell ID can not get the location either, the tracker will reply “Can not get location, please try again later”.

### 4. Arm (Shock Alarm) by sending SMS

Send SMS “SHOCKALARMON\*123456” to tracker, “SHOCKALARMON” is a command, “123456” is password, the tracker will send back the information “Set Shock Alarm ON” to indicate the operation is success and go to arm state, if the password is not right, the operation is fault, the tracker will send back information “Wrong Password”.

After go to shock alarm state, the system will check shock sensor, if the shock sensor is trigger **(only continuously shock can trigger the shock alarm to avoid trigger by mistake)**, the tracker will send alarm and location information by SMS to the authorized phone number, and send the alarm information to the website server, also the tracker will call the authorized number A first, if no

answered then B and C, if 3 authorized all no answered, then stop calling, If the tracker is triggered continually, every authorized phone will receive max 3 alarm SMS per hour.

If the authorized number have been set, use the authorized phone number to send SMS "ARM#" to the tracker also can trigger the tracker to enter arm state.

The shock alarm SMS is as follow:

Shock Alarm

<https://maps.google.com/maps?q=22.67680N,114.15188E>

Battery:88%

## **5. Disarm (Shock Alarm) by sending SMS**

Send SMS "SHOCKALARMOFF\*123456" to tracker, "SHOCKALARMOFF" is a command, "123456" is password, the tracker will send back the information "Set Shock Alarm OFF" to indicate the operation is success and disable the shock alarm, if the password is not right, the operation is fault, the tracker will send back information "Wrong Password".

After disable the shock alarm, the system will not check shock sensor again. Also send SMS "CANCELALARM\*123456" to the tracker can cancel this alarm setting.

If the authorized number have been set, use the authorized phone number to send SMS "DISARM#" to the tracker also can trigger the tracker to enter arm state.

## **6. Set Move Alarm by Sending SMS**

Send SMS "MOVEALARMON\*123456" (Enable move alarm) or "MOVEALARMOFF\*123456" (Disable move alarm) to the tracker, "MOVEALARMON" or "MOVEALARMOFF" is a command, "123456" is password, the tracker will send back the information "Set Move Alarm ON" or "Set Move Alarm OFF" to indicate the operation is success, if the password is not right, the operation is fault, the tracker will send back information "Wrong Password".

After enable move alarm, the system will locate tracker and get the current location, and then set the current location as original point, later the tracker will check new the location distance from the original point, if the distance between is bigger than 500 meters, the move alarm will be trigged and the tracker will send alarm and location information by SMS to the authorized phone number. If the tracker is triggered continually, every authorized phone will receive max 3 alarm SMS per hour.

The move alarm SMS is as follow:

Move Alarm

<https://maps.google.com/maps?q=22.67680N,114.15188E>

Battery:88%

After disable the move alarm, the system will not check distance again. Also send SMS "CANCELALARM\*123456" to the tracker can cancel this alarm setting.

## **7. Set Geo-fence Alarm by Sending SMS**

Send SMS "GEOFENCEALARMON\*123456\*yyy" (Enable break geo-fence alarm yyy km) or "GEOFENCEALARMOFF\*123456" (Disable break geo-fence alarm) to the tracker, "GEOFENCEALARMON" or "GEOFENCEALARMOFF" is a command, "123456" is password, "yyy" is the radius of the geo-fence (yyy is from 001 to 999, unit is km), the tracker will send back the information "Set Break Geo-fence Alarm ON" or "Set Break Geo-fence Alarm OFF" to indicate the operation is success, if the password is not right, the operation is fault, the tracker will send back information "Wrong Password".

After enable geo-fence alarm, the system will locate tracker and get the current location, and then set the current location as original point, later the tracker will check new the location distance from the original point, if the distance between is bigger than yyy km, the geo-fence alarm will be trigged and the tracker will send alarm and location information by SMS to the authorized phone number. If the tracker is trigged continually, every authorized phone will receive max 3 alarm SMS per hour.

The geo-fence alarm SMS is as follow:

Geo-fence Alarm

<https://maps.google.com/maps?q=22.67680N,114.15188E>

Battery:88%

After disable the move alarm, the system will not check distance again. Also send SMS "CANCELALARM\*123456" to the tracker can cancel this alarm setting.

## **8. Set Over Speed Alarm by Sending SMS**

Send SMS "OVERSPEEDALARMON\*123456\*xxx" (Enable over speed alarm xxx km/h) or "OVERSPEEDALARMOFF\*123456" (Disable over speed alarm) to the tracker, "OVERSPEEDALARMON" or "OVERSPEEDALARMOFF" is a command, "123456" is password, "xxx is the setting speed limited", the tracker will send back the information "Set Over Speed Alarm ON" or "Set Over Speed Alarm OFF" to indicate the operation is success, if the password is not right, the operation is fault, the tracker will send back information "Wrong Password".

After enable over speed alarm, the system will check the real time speed when the car is running.

If the current speed is higher than the setting speed limited, the tracker will send alarm and location information by SMS to the authorized phone number. If the tracker is triggered continually, every authorized phone will receive max 3 alarm SMS per hour. The over speed alarm SMS is as follow:

Over Speed Alarm, current speed:XXX km/h

After disable the over speed alarm, the system will not check speed again. Also send SMS "CANCELALARM\*123456" to the tracker can cancel this alarm setting.

#### **9. Check Alarm setting**

Send SMS "ALARM\*123456" to tracker, "ALARM" is a command, "123456" is password, the tracker will send back the information "Shock Alarm:OFF,Move Alarm:OFF,Geo-fence:OFF,Over Speed Alarm:OFF,Alarm calling:ON,Alarm SMS:ON" to indicate all the alarm setting, if the password is not right, the operation is fault, the tracker will send back information "Wrong Password".This command is used for check the tracker alarm setting.

#### **10. Cancel All Alarm Setting**

Send SMS "CANCELALARM\*123456" to tracker, "CANCELALARM" is a command, "123456" is password, the tracker will send back the information "All Alarm setting Canceled", this command will cancel all the alarm setting include Shock Alarm / Move Alarm / Geo-fence Alarm / Over Speed Alarm, if the password is not right, the operation is fault, the tracker will send back information "Wrong Password".

#### **11. Monitor Sound in Car**

Send SMS "LISTEN\*123456\*13987654321" to tracker, "LISTEN" is a command, "123456" is password, "13987654321" is the number that the tracker will call back, if the operation is success, the tracker will call back immediately to the number you set(13987654321), user pick up the call and then can hear the voice in car. if the password is not right, the operation is fault, the tracker will send back information"Wrong Password".

## Platform Operation

The platform operation please refer the platform operation guide, scan the following QR code or click the website link to download the platform manual, visit website [www.999gps.net](http://www.999gps.net) and click the Manual icon also can download the platform manual.



[Platform User Guide Word Version](#)



[Platform User Guide Word Version](#)

## Notes:

1. Please confirm that the SIM card PIN code has been disabled, it means if mobile phone use this SIM card, it is not necessary to input any password. Otherwise the tracker can not find GSM or CDMA network, the Green LED will keep ON .
2. This tracker use 2G GSM & 3G WCDMA network, and it upload tracking only through internet, it can not work in CDMA network CDMA2000 network, if the 4G SIM card can use in 2G GSM or 3G WCDMA network, then this kind of 4G SIM card can be used in this tracker.
3. The antenna of GSM and GPS is built in tracker, please note that the install location of the tracker must can receive the GPS signal, if the OBD socket place can not receive GPS, please add an external OBD wires to install the tracker to other place. please leave away the tracker from big metal, and keep away from the magnetic components.
4. The GPS need 10-200 seconds to locate the position, when the GSM signal is weak or the network is very busy, the SMS maybe delay to send by the GSM network, this is normal.
5. The tracking data on our server will keep 6-12 months, the old data will be deleted.

## Trouble Shooting

1. The tracker auto power off: please confirm the tracker power supply is connect properly .
2. After power on the tracker, the tracker RED LED keep on, and it has not any repose, and no



ring, please confirm the SIM card has been installed properly, the SIM card PIN code is disable, and the SIM card has enough charge, and the mobile phone can work well in that place. If the tracker work well the Green LED will flash once every 4 seconds.

3. If the tracker can not upload location to website, please confirm the SIM card GPRS function is enabled, and the APN or GPRS username & password have been set properly (call the mobile phone to confirm the APN & GPRS username and password). if the tracker do not move, the tracker will not upload tracking, try to move the tracker.
4. If the tracker can not send back information by SMS, please confirm the SIM card has ID caller display function and SMS service function, and you have set the center or slave center number (only center or slave center number can send SMS), and please read the SMS information of the tracker sending back, and check the instruction & password is right or not.
5. Can not login the platform: use SMS to check the ID of the tracker, and try it again, if not success please contact distributor.
6. After go out the under ground park, some tracking maybe lost, the GSM and GPS module will take a few minutes to receive signal and re-locate, some tracking maybe lost, this is normal.
7. Some time some location point is lost, this is normal, in the transmit process, some point maybe is lost, but this will not happen very often.

### Specification:

Working Voltage	9-40V DC	GSM Frequency	850/900/1800/1900Mhz (global band)
GSM/WCDMA Chip set	Qualcomm (USA)	WCDMA Frequency	850(800)/900/1900/2100 (global band )
GPS Chip Set	Qualcomm (USA)	Antenna	Built in
Locate Precision	5-10 Meters	Recharging Current	5V/300-500mA
Standby Current	< 3 mA 5V DC	Locating Current	< 150 mA 5V DC
Battery	250mAh	GPS Hot Start Time	1-2 seconds
GPS Cold Start Time	<36 Seconds	Working Temperature	-20 °C to +55 °C
Absolute Temperature	-35 °C to +70 °C	Storage Temperature	-40 °C to +80 °C

## Warranty

This system has been tested before sold. We strongly recommend you to get this system installed by professional. There is a one-year warranty except the following condition:

1. Installed, fixed, or changed by personally or unprofessional.
2. Warranty will eliminate if the ownership of the tracker has been changed.
3. Parts damaged by man-made.
4. Battery, adapter, wires, etc.

Warning: this device is just a auxiliary product that applying the location of current object, we have not any responsibility if you have damage or lost in using this tracker.

Customer			
User Mobile Phone		Tracker SIM card	
Date	Year	month	day
Model	CCTR-830G	Serial Number	
Distributor			

Notes: The explanation of this manual is belonged to our company, some small changes may not notice customer, if you have any problem please contact us, thanks !