

CCTR-800G 2G/3G(WCDMA) Tracker User Manual -201711

Welcome to use this portable GPS tracker. This product is with GPS module and GSM module, that has many new and unique functions, such as extra big battery (6000mAH), water-proof, powerful magnetic, LBS locate without GPS signal, check current location by iOS iPhone & Android App / Web / SMS etc. Its standby time can reach over 2 month(about 30-60 days, work mode 1). User can control different working mode for different using, it can work without platform, just send SMS to check current location, also it can upload location to sever by user setting time interval, and more sending sms can make the tracker to go to sleep and weak up & locate one time every day, This GPS tracker suit for personal tracking ,vehicle tracking or outdoor workers tracking.

This tracker also have LBS locating function (mobile phone base station CELL ID), if no GPS signal in some place, such as underground park, indoor room, or around high building with bad GPS signal, the tracker will locate with LBS (normally the LBS CELL ID locating precision is about 50-500m in the city, and the GPS locating precision is about 10m).

Using the unique user name and password (Default user name is the last 7 digital of the tracker ID, password is same with user name), user can check the history track max to 6-12 months, the real time location, and set the over speed alarm, the geo-fence alarm and so on. The website is www.999gps.net. It suit for personal user or fleet user, and it can locate object by visiting website with PC or mobile phone, Android App or iOS iPhone App on mobile phone, sending sms to get location Google map link etc.

Scan the following QR code or click the following link can download or read online the manual in Word or Pdf format.



[QR-Manual Download \(Word\)](#)



[QR-Manual Download \(Pdf\)](#)

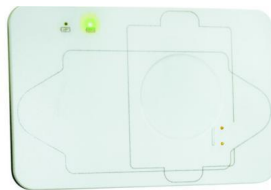
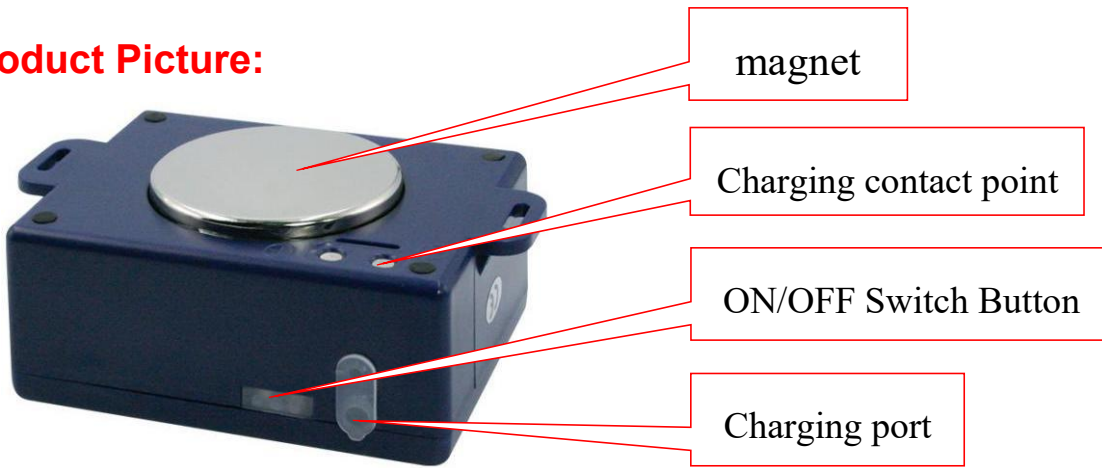


[iPhone App Download](#)



[Android App Download](#)

Product Picture:



Car Adapter(**Optional**) & charging Wire

Charging board(**Optional**)

power supply box(**Optional**)

Function Specification:

- Portable Design, No installation, Easy using;
- Big Li-battery(6000mAh) standby time up to 60 days;
- SMS/Calling/App/Web Locate;
- Can be worked without platform;
- 5 different Geo-fence in or out alarm can be set;
- Built in shock sensor for shock alarm;
- User change work & report mode by sms
- GPS + LBS can be used indoor locate;
- Global GSM and WCDMA frequency band;
- Auto configure APN;
- Low Battery Alarm;
- Auto sleep & wake up & locate time can be set;
- Suit for personal or vehicle tracking;
- With the charging indicator light, charging is ON/OFF
bright red light, no charge or full of electricity when the lights off

LED Flash Indicator:

- | | |
|-------------------------------------|---|
| ● Green Power LED Flash once | : working well |
| ● Green Power LED Flash twice | : GSM working well and GPS signal weak |
| ● Green Power LED Flash three times | : GSM and GPS working well but battery is low |
| ● Green Power LED Flash four times | : GSM working well, battery low & no GPS signal |
| ● Green Power LED ON continuously | : GSM Searching network |

- Green Power LED OFF continuously : Power off
- Red GSM LED Flash once : Upload location to server OK
- Red GSM LED Flash twice : Upload location to server Fail

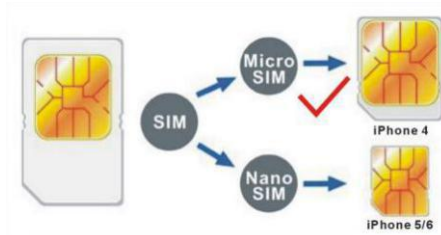
Before Using:

1. At first to buy a 3G WCDMA or 2G GSM SIM card which have SMS service and incoming caller ID service & internet data service, in which the SIM card phone number is the very tracker number and all the operation for the tracker is to this number, such as locating immediately, add & delete preset number, change password, enable over speed alarm, enable move alarm etc.

Note:

1. This tracker use WCDMA/GSM network, and need about 10MB-30MB data per month according the different working mode, recommended order a internet data package for the SIM card.

2. This tracker use micro SIM card (bigger than SIM card used in iPhone 5/6), please see the following diagram to select the SIM card.



2. Power ON / OFF

- ◆ When power is OFF, press the “ON/OFF” button till the LED is ON, then release the button, the tracker is powered ON, when the LED flash means the tracker is working well.
- ◆ When the power is ON, press the “ON/OFF” button till the Green LED Flash fast, and then release the button, and press the ON/OFF 3 times, the tracker will turn off LED & tracker.

3. Install SIM card: Pulling out the long narrow rubber stopple beside the tracker, you can see the SIM card socket, beside which, press the yellow switch button with a tool and then the holder will come out. Pull it out and put the SIM card in the holder and then push the holder into the tracker (Pay attention to that the SIM card metal contact pin can not face down to the holder), and push the long narrow rubber stopple into the tracker to cover the SIM card socket.

Note: Before install or uninstall the SIM card, please power off the tracker.

4. Recharge the tracker

- ◆ We recommend using OEM charger to recharge the tracker. this tracker use the 5V DC voltage to

recharge, so too high voltage or AC voltage may damage the tracker or even cause accidents.

- ◆ Use the car adapter or home charger or PC USB to recharge the tracker: insert the USB wire into the charging port beside the tracker, the other side connect to the home or car charger, If the LED on the charger is RED, it means it is recharging, if the LED on the charger is GREEN, it means the recharging is finished. This will take about 5-10 hours.



5. Battery Low Alarm

When the battery voltage in the tracker is too low, the tracker GREEN LED will flash 3 or 4 times, and send battery low alarm information to authorized number, and later if the battery power is too low, it will power off automatically.

6. Back to Factory Setting (Default Setting)

Sending SMS "FACTORY*123456" to the tracker SIM card number, the tracker will delete all the user setting (authorized number / Alarm setting / Password / APN / Working mode etc), reset to factory default setting, and then re-power on. Also you can use another way back to factory setting: turn off the tracker, then press the "ON/OFF" button till the LED flashes faster, then release the button, the tracker will re-power on.

7. Antenna

- ◆ The Antenna of GSM/WCDMA and GPS are built in the tracker.
- ◆ Please leave the tracker away from big metal, this will reduce the GSM/WCDMA and GPS signal.

8. Using Condition

The working temperature is -20 °C to 60 °C, over this range the specification of the tracker maybe can not reach the standard level, the storage temperature can reach to -40 °C to 80 °C.

Simply Using

1. First to buy a 2G GSM or 3G WCDMA mobile phone SIM card and enable data service, order a data package (Normally will use about 10M-30M GPRS data every month), install in the tracker, please refer the above **Before Using1**.
2. Press any ON/OFF button till the tracker power on, first time using please put the tracker outdoor for

easy get GPS & GSM /WCDMA signal.

3. Check the LED flashing to confirm the tracker work well (Refer the above **LED Flash Indicator**).

4. This tracker default working mode is 1, the tracker locating & uploading is controlled by shock sensor, if the tracker is moving, the tracker will upload the location to server every 30 seconds (time interval can be set, please refer **Locate Operation & Setting 6**), if the tracker stop moving, 3 minutes later, the tracker will stop locating & uploading location to server. 5 different geo-fence in or out alarm can be set, the alarm information will send to user by SMS, the battery working time can reach to 60 days at this working mode.

5. If the tracker is used for tracking express goods, working mode can be set to 3, and the power on off time interval can be set, at this status, the tracker will power on every setting time (for example every 2 hours) & locate and uploading location to server, and then auto power off to waiting another power on. The working mode changing please refer the following **Locate Operation & Setting 5**.

6. Visit & login the tracking platform www.999gps.net, display current location, playback history tracking etc can be operated, platform user name and password is the last 7 digital numbers of the tracker's ID (the ID is print on the battery, for example ID is : 800201512345678, and then the user name is : 2345678, password is :2345678, user can change the password).

7. iPhone Android App also use the same user name and password with website login, downloading & installation please refer the platform operation guide.

8. This tracker can auto download & configure APN & GPRS user name & password, if the auto configure is not right, the tracker can not upload location to server, then you need send SMS to tracker to change the APN & GPRS manually, and send "CHECK*123456" to tracker can check the tracker setting, call the tracker SIM card supplier to confirm the APN & GPRS is right, please refer **Senior Operation & Setting 6** to set APN & GPRS username and password.

In the following content, all the SMS content is mark by "", and this "" is not include in the SMS content, it is only to used to mark the SMS content.

Locate Operation & Setting

1、 Add authorized phone number

Send SMS"ADDPHONE*123456*A*phonenumber" to tracker is OK, "ADDPHONE" is fixed command; "123456" is password; "A" is authorized number location, every tracker have 3 authorized phone number locations, A and B, and C, so you can set 3 phone numbers, phonenumber means the mobile phone number you want to set, if the add operation is success, the tracker will send back the information "Add Preset Phone OK", if the password is not right, the operation is fault, the tracker will send back information "Wrong Password".

2、 Making a call trigger reply Location Description by Text (Platform is not necessary):

Call the tracker SIM card number, after ring 3 times, the tracker will hang up the call automatically and

locate immediately, a few seconds later, the tracker will send back SMS with current location text description, If the tracker has set the authorized phone number, only authorized number calling the tracker can trigger the tracker locate and reply SMS, if the other phone number call to the tracker, the tracker will hang up the calling immediately without ring & will not reply SMS.

If the tracker can not get the location text description, the tracker will reply the location with Google map link SMS to user.

3、 Sending SMS trigger reply Google map link SMS(Platform is not necessary):

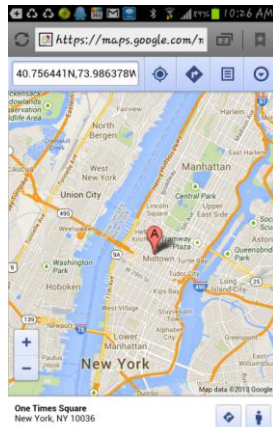
Send SMS "URL*123456" to the tracker also can trigger the tracker locate & reply SMS with current location with Google map link, "URL" and "456" is a command, "123456" is password; if the password is not right, the operation is fault, the tracker will send back information "Wrong Password.

If the tracker has set the authorized phone number, then send SMS "URL#" also can trigger the tracker locate & reply SMS with current location text description, the password is not necessary any more.

The SMS examples is same as follow:

<http://maps.google.com/maps?q=N40.756441,W73.986378>

Battery:91%



4、 LBS Located (GSM network Cell ID Locate):

When the tracker is triggered to locate, the tracker will reply SMS with CELL ID location to user, and the precision is about 50-500m, according to the around mobile phone base station density. The location SMS is like below, click the link the map is same with the above 2.

Cell ID Location

<http://maps.google.com/maps?q=N40.756441,W73.986378>

Battery:91%

Note: The LBS location precision is not very high, in the city maybe 30-50 meters, in country side maybe over 300 meters according the GSM base station density. So this location only can be used as a reference. If the LBS can not locate either, the tracker will reply "Can not Locate now, Please Try Later !".

5、 Set System Working Mode

Send SMS "MODE*123456*X" to the tracker, "MODE" is command, "123456" is password, "X" is the working mode, it is 1,or 3. if the "X" is 3, the SMS command should be "MODE*123456*3*Y" , "Y" is the sleep

time from 01-99, unit is hour. after receive the command, the tracker will reply SMS "Working mode set to X (1 Working,3 Cycle On/Off GPRS)". The working modes are described below:

Mode 1 (Factory Mode) ----- Continuously Working (Locate every 30 seconds)

This mode is the default working mode. under this mode, the tracker can receive SMS or calling, locate and report by GPRS to the sever per 30 seconds.

Mode 3 ----- Cycle ON/OFF & Upload Location to Server by GPRS

Under this mode, the system ON / OFF is controlled by timer (interval time is Y hours). The tracker will power on automatically and locate with GPS and then upload the location information to server by GPRS, and then a few minutes later, the tracker will power off automatically, and the timer will begin to count, after the time is up, the tracker will power on again and then locate & upload the current location to server by GPRS, and power off again. and waiting the timer is up and repeat the above process. The battery power cost is very low in mode 3, normally this mode is used for checking location every setting time (For example check one time every day or every hour), not used for real time tracking.

6、Set Upload Interval Time

Send SMS "INTERVAL*123456*T" to the tracker, "INTERVAL" is command, "123456" is password, "T" is the interval time from 30 to 999, unit is second. The tracker will send back information "Set Interval time T OK", if the password is not right, the operation is fault, the tracker will send back information "Wrong Password". 30 seconds is the default interval time. Longer upload interval time can save battery and GPRS data cost, the total mileage on the platform will have big error if the interval time is bigger than 30 seconds.

Senior Operation & Setting

1. Check Authorized Phone Number by SMS

Send SMS "CHECKPHONE*123456" to the tracker number, "CHECKPHONE" is command; "123456" is password; the tracker will send back the information "Authorized Phone A: 13987654321 ; B : 13876543210; C: 13765432100 , the phone number is just an example.

2. Delete Authorized Phone Number by SMS

Send SMS "DELETEPHONE*123456*A" to the tracker number, "DELETEPHONE" is command; "123456" is password; "A" is authorized phone number location, there are 3 locations "A" and "B" and "C"; if the delete operation is success, the tracker will send back the information "Delete Authorized Phone OK".

3. Check Tracker Password

Send SMS "CHECKPASSWORD#" to the tracker number, "CHECKPASSWORD" is command, if the operation is success, the tracker will send back the information "Password: 888888"; "888888" is an example.

The tracker password is used to protect the tracker only can be operated by owner, every SMS command need follow tracker password, the default tracker password is 123456, for higher security please change the tracker password, this password is different with the tracking platform login password.

Note: Only The authorized phone can check the password.

4. Change Tracker Password

Send SMS "CHANGEPASSWORD*123456*888888" to the tracker number, "CHANGEPASSWORD" is command; "123456" is old password; "888888" is new password; if the operation is success, the tracker will send the information " New Password: 888888" to every preset phone number".

Note: Only the authorized phone can change the password.

5. Set Alarm by SMS: ON/OFF

Send SMS "SMSON*123456" (Sending SMS to authorized number) or "SMSOFF*123456" (No SMS) to the tracker, "SMSON" or "SMSOFF" is a command, "123456" is the tracker password, the tracker will send back the information "Alarm by SMS : ON" or "Alarm by SMS :OFF", If the alarm by SMS is ON, then when the alarm is triggered, the tracker will send SMS to the authorized number to notice the alarm.the default setting is ON.

6. Set APN & GPRS User name and Password

This tracker can download & configure APN & GPRS username password automatically after power on, if the APN & GPRS user name password are not right, then you need sending SMS to tracker to change them, if the tracker can not upload location to platform (Red LED flash twice), please confirm the auto configuration of APN & GPRS user name password is right, the APN name and GPRS user name & password please call your tracker SIM card mobile phone company to confirm, the auto configuration APN & GPRS of the tracker please sending SMS "CHECK*123456" to the tracker to check. if the APN & GPRS are not right, please set by the following description.

Send SMS "APN*123456*apnname" to the tracker, in which, "APN" is the fixed command, "123456" is the password and "apnname" is the APN name of a mobile phone company. Having successfully been made, there will be a SMS "APN: apnname".

Send SMS "USERNAME*123456*username*password" to the tracker, "USERNAME" is a command, "123456" is the password of the tracker; "username" is the mobile company GPRS user name, "password" is the mobile company GPRS password, if the operation is success, the tracker will send back the information "Username:username, Password:password", if the password is not right, the operation is fault, the tracker will send back information "Wrong Password".

7.Arm / Disarm (Shock Alarm) by sending SMS

Send SMS "SHOCKALARMON*123456" to tracker, "SHOCKALARMON" is a command, "123456" is password, the tracker will send back the information "Set Shock Alarm ON" to indicate the operation is success and go to arm state, if the password is not right, the operation is fault, the tracker will send back information

“Wrong Password”.

After go to shock alarm state, the system will check shock sensor, if the shock sensor is trigger (**only continuously shock can trigger the shock alarm to avoid trigger by mistake**), the tracker will send alarm and location information by SMS to the authorized phone number, and send the alarm information to the website server, also the tracker will call the authorized number A first, if no answered then B and C, if 3 authorized all no answered, then stop calling, If the tracker is triggered continually, every authorized phone will receive max 3 alarm SMS per hour.

The shock alarm SMS is as follow:

Shock Alarm

<https://maps.google.com/maps?q=+40.756441,-73.986378>

Send SMS “SHOCKALARMOFF*123456” to tracker, “SHOCKALARMOFF” is a command, “123456” is password, the tracker will send back the information “Set Shock Alarm OFF” to indicate the operation is success and disable the shock alarm, if the password is not right, the operation is fault, the tracker will send back information “Wrong Password”.

After disable the shock alarm, the system will not check shock sensor again. Also send SMS “CANCELALARM*123456” to the tracker can cancel this alarm setting.

Shock alarm notice by sending SMS & calling can be enabled ON or OFF, please refer **Senior Operation & Setting 5.**

8. Enable And Disable Overspeed Alarm (No Platform Necessary)

Send SMS “OVERSPEEDALARMON*123456*SSS” to the tracker number, “OVERSPEEDALARMON” is command, “123456” is password, “SSS” is the setting alarm speed, unit is km/hour. The tracker will send back the information “Set Overspeed Alarm On :SSS km/h” .

After enable overspeed alarm, the system will check the speed every 5 minutes. If the speed is higher than the setting speed, the tracker will send alarm and location information by SMS to the authorized phone number A (only send to A), The authorized phone will receive max 3 alarm SMS per hour, one hour later it will be active again.

The overspeed alarm SMS is as follow:

Overspeed Alarm

Current Speed:110km/h,Setting:100km/h

Battery:88%

Send SMS “OVERSPEEDALARMOFF*123456” to the tracker number, “OVERSPEEDALARMOFF” is command, “123456” is tracker password, the tracker will send back the information “Set Overspeed Alarm Off ” .

Note: In the default, the over speed alarm setting is OFF.

9. In & Out Geo-fence Alarm (5 Geo-Fences Can be Set) set or delete

Total 5 Geo-fences can be set, the geo-fence is a circle and the radius is set by SMS, and the center of the circle is set by tracker current location or another position (including longitude and latitude)set by SMS.

Note: After enable the geo-fence alarm, when the unit is moving, it will detect the fence status live.

Default all the geo-fence alarm is OFF.

The command is "SETFENCE*123456*Geo-Name*GGG*22.680307N*114.146843E"

"Geo-Name" is the fence's name user defined, like school, family or other name, max 8 characters and can be added up to 5 different fence.

"GGG" is the fence's radius, from 001 to 999, unit is km.

"22.680307N*114.146843E" is the longitude and latitude of the fence center point . "N" is north, "S" south, and "E" is east, "W" west.

if no longitude and latitude in the SMS command, like "SETFENCE*123456*Geo-Name*GGG", the tracker will turn on the GPS & locate immediately, the tracker will set current location as the fence center point, if the tracker locate failed, the command will failed.

Going in or going out the fence all can trigger the fence alarm, after the fence alarm is triggered, an alarm SMS will be sent to the preset phone A, B and C. And the tracker will dial the 3 preset phone one by one to notice the user, every trigger will only send SMS one time and dial the 3 preset phone one time.

In or Out Geofence (Geo-Name) Alarm

<https://maps.google.com/maps?q=22.67680N,114.15188E>

Battery:88%

Delete the fence

You can delete any fence by the name, like below:

FENCEOFF*123456*Geo-Name

If the operation successes, a SMS would be back,"set fence (Geo-Name) alarm off".

10. Check Alarm Setting

Send SMS "ALARM*123456" to the tracker number, "ALARM" is command, "123456" is password, the tracker will send back the information of the alarm setting, for example:

Shockalarm:OFF,Poweralarm:On,Fence:OFF,Over speed alarm:OFF, Alarm SMS:ON battery:80%

11. Cancel All Alarm Setting

Send SMS "CANCELALARM*123456" to tracker, "CANCELALARM" is a command, "123456" is password, the tracker will send back information " Cancel All Alarm Setting", and cancel all alarm setting .

Note: RESET and FACTORY also can cancel all alarm setting, please see the following.

12. Setting and cancel Power OFF alarm

Send SMS"POWERALARMON*123456"to tracker,"POWERALARMON"is a command,"123456" is

password, the tracker will send back information " Power off alarm was turned on battery :80%".

Send SMS"POWERALARMOFF*123456"to tracker,"POWERALARMOFF"is a command,"123456" is password, the tracker will send back information " Power off alarm was turned off battery :80%".

13. SOS Emergency Help (No Platform Necessary)

In the normal mode press the button ON/OFF on the tracker and don't release (Press button over 6 seconds), the GREED LED will flash quickly, later it will be turned OFF, then release the button, the tracker will send SOS help information to all 3 preset phone, and then call the authorized number A first, if no answered then B and C, if 3 authorized number all no answered, then stop calling.

The SOS SMS information sample is as follow:

HELP!

<https://maps.google.com/maps?q=22.67680N,114.15188E>

Battery:91%

If no authorized number is added, the SOS information can not be sent. If the SOS information is received, please confirm the user is safety.

14. Check tracker setting

Send SMS "CHECK*123456" to the tracker number, "CHECK" is the fixed command, "123456" is password. The tracker will send back information including software version, ID S/N number, IP address, authorized phone number, GPS and GSM signal etc, normally this command is used to test the tracker is working well or not. The following is an example :

800G,V Sep 08 2016,CC830,800201700012345,MODE:1,www.999gps.net,58.64.155.133,8011,
30,A:13987654321,B:13876543210,C:13765432101,GPS
9,WCDMA:-95dBm,CMNET,User,Password,460,00,255,1,9376,3613,07,88%

800G	:Product model
V Sep 08 2016	:Software version
CC830	:Protocol(CC800/CC828/CC830/CC630 etc)
800201700012345	:ID number
MODE:1	:System Working Mode
58.64.155.133,8011	:Server IP & Port
30	:Upload Time Interval
A:13987654321,B:13876543210,C:13765432101	:Authorized Number
WCDMA:-95dBm	:WCDMA signal
CMNET	:Current APN
User	:GPRS User Name
Password	:GPRS Password
460,00,255,1,9376,3613,07	
	:GSM Base Station Information

"MCC,MNC,TA,NUM,LAC, CID,RXLEV ,LAC2,CID2,RXLEV2..."

88%

:Built in Battery Power

15. Re-power On & Reset Tracker

Send SMS "RESET*123456" to the tracker number, "RESET" is a command, "123456" is password. The tracker will send back information "Reset Tracker and cancel all alarm setting", then the tracker will power off and then power on automatically, and this command will not cancel user setting.

16. Back to factory configuration

Send SMS "FACTORY*123456" to the tracker number, "FACTORY" is the fixed command, "123456" is password. The tracker will send back information "Set factory setting OK", then the tracker will cancel all the alarm setting in the tracker, and also delete all the authorized phone number, delete the APN and GPRS user name and password, change the tracker password to 123456, reset the IP address, reset the system working mode and the interval time, and so on.

Platform Operation

The tracking platform is www.999gps.net, the current location & history tracking can be checked on the platform with PC website & mobile phone App login (Login name is the last 7 digitals of the tracker ID, the ID is print on the bar code label, ID also can be check by SMS). The platform is life time free service charge, user only need pay the SIM card data charge (every month maybe cost 10-30M GPRS data), please note that the battery working time will be very short after enable the uploading location to server, and the working time is different according to the different working mode and upload time interval.

Scan the following QR code or click the website link to download the platform manual, visit website www.999gps.net and click the Manual icon also can download the platform manual.



[Platform User Guide Word Version](#)



[Platform User Guide Word Version](#)

Set Website Server IP address

The tracker IP address has been set to default : 58.64.155.133,8011 in factory, For normally this is not necessary to change. But if you need upload location to your own server, send SMS "IP*123456*100.101.102.103,8888" to the tracker can change the IP & port, in which, "IP" is the fixed command, "123456" is the password and "100.101.102.103,8888" is the IP address & port of the your own server. Having successfully been set, there will be a SMS "IP: 100.101.102.103,8888".

Trouble Shooting

1. Please confirm that the SIM card PIN code has been disabled, it means if mobile phone use this SIM

card, it is not necessary to input any password.

2. This tracker use 2G GSM and 3G WCDMA network, other SIM card and network is invalid.
3. The tracking data on our server will keep 6-12 months, the old data will be deleted.
4. After power on the tracker, call the tracker, no response, and no ring, please confirm the SIM card has been installed properly, and the SIM card has enough charge, and the mobile phone can work well in that place.
5. If the tracker can not upload location to website, please confirm the SIM card GPRS function is enabled, and the APN or GPRS username & password have been set properly (call the mobile phone to confirm the APN & GPRS username and password).
6. If the tracker can not send back information by SMS, please confirm the SIM card has ID caller display function and SMS service function, and you have set the center or slave center number (only center or slave center number can send SMS), and please read the SMS information of the tracker sending back, and check the instruction & password is right or not.
7. Can not login the platform: use SMS to check the ID of the tracker, and try it again, if not success please contact distributor.
8. After go out the under ground park, some tracking maybe lost, the GSM and GPS module will take a few minutes to receive signal and re-locate, some tracking maybe lost, this is normal.
9. Some time some location point is lost, this is normal, in the transmit process, some point maybe is lost, but this will not happen very often.

Specification:

Working Voltage	5V DC	GSM Frequency	850/900/1800/1900Mhz (global band)
GSM/WCDMA Chip set	INTEL	WCDMA Frequency	850(800)/900/1900/2100 (global band)
GPS Chip Set	U-Blox	Antenna	Built in
Locate Precision	5-10 Meters	Recharging Current	5V/500-800mA
Standby Current	< 2 mA 5V DC	Locating Current	< 150 mA 5V DC
Battery	6000mAh	GPS Hot Start Time	1-2 seconds
GPS Cold Start Time	<36 Seconds	Working Temperature	-20 °C to +55 °C
Absolute Temperature	-35 °C to +70 °C	Storage Temperature	-40 °C to +80 °C

Packing List:

Tracker Main Unit	1 set	
USB Charging Wire	1 pcs	
User Guide Card	1 pcs	Print
Car Charger	1 pcs (Optional)	9-30V Input,0.5A, 5V Output
Charging Board	1 pcs (Optional)	5V Input,0.5A, 4.3V Output
Home AC Charger	1 pcs (Optional)	110-220V Input,0.5A, 5V Output

Warranty

This system has been tested before sold. We strongly recommend you to get this system installed by professional. There is a one-year warranty except the following condition:

1. Installed, fixed, or changed by personally or unprofessional.
2. Warranty will eliminate if the ownership of the tracker has been changed.
3. Parts damaged by man-made.
4. Battery, adapter, wires, etc.

Warning: this device is just a auxiliary product that applying the location of current object, we have not any responsibility if you have damage or lost in using this tracker.

Customer			
User Mobile Phone		Tracker SIM card	
Date	Year	month	day
Model	CCTR-800G	ID Number	
Distributor			

Notes: The explanation of this manual is belonged to our company, some small changes may not notice customer, if you have any problem please contact us, thanks !