

CCTR-807 GPS Long Life Asset GPS Tracker-202005

Welcome to use CCTR-807 long standby wiring free asset GPS tracker. This product is designed for the monitoring and management of instruments, equipment, vehicles, engineering machinery, etc. No external power supply is required. Built-in high-capacity low self-loss long life lithium Manganese battery (4500mAh, three-section CR123A battery), unique ultra-low power consumption design, default every day (24 hours) automatic wake-up one time. after locate & upload the location to server, the tracker will go to sleep again, under this condition battery can support 3 years working time, It is an ideal choice for leased asset management. This product does not need wiring. It can be attached to the metal with strong magnetic magnet. When the device is not positioned, the device is in deep sleep mode, the GPS detector can not detect the GPS tracker, which is convenient for hidden and hidden installation. This tracker is not suit for real time tracking, it is especially suitable for use as a backup GPS.

Tracking platform URL: www.999gps.net

Login to the tracking platform web page with PC or mobile phone browser and log in with the default username and password (the default login name and password are: the last 6 digits of the ID number, the ID number is on the back of the device, if the ID number is 1501231688, the default username is 231688, password is 231688 or 123456), the location can be displayed on the map, and playback track / running report also can be operated. Also mobile phone app can be used to track the device, the log in name & password is same with website.

Visit website <http://d.999gps.net> with PC or mobile phone browser, the App can be download and installed, also the manual can be read or download on this page, Scan the following QR code also can install the mobile phone App.



[iPhone App Download](#)



[Android App Download](#)

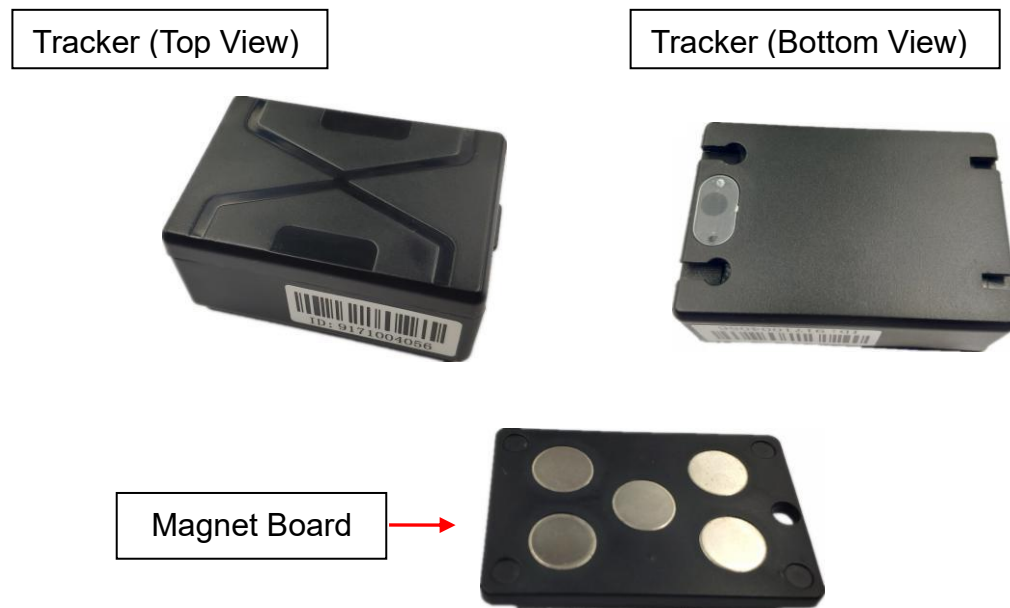
Notes:

1, This tracker is not suit for real time tracking, it is especially suitable for use as a backup GPS tracker, we recommended it work together with real time tracking device, one is for real time tracking, one is for backup tracking.

2, This tracker use 2G GSM network to upload the location to server, 3G card or 4G SIM card supporting 2G GSM network can also be used.

3, This tracker upload location through internet, the monthly traffic does not exceed 1M, it is recommended to have a proper data plan per month.

1. Product pictures and accessories::



2. Specification:

- No wiring, no complicated installation;
- Portable design, strong magnetic is easy to adsorb on metal (requires optional magnet);
- Normal sleep shutdown can not be detected, easy to hide;
- Long-life low-loss battery, supporting 3-year positioning (1 positioning per day);
- Tracking by Mobile app and PC website;
- GPS+LBS multi-base station tracking function, no blind zone;
- GSM quad-band system is universal;

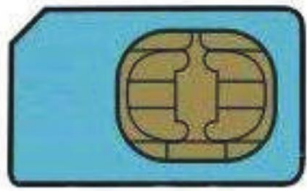
3. Before Using:

3.1 Install SIM Card

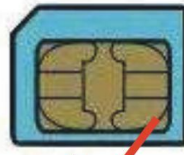
The GPS tracker need a 2G GSM SIM card with internet visiting function, the tracker will locate once a day, the monthly total data cost is less than 1M (1000K), the minimum consumption flow package can be fulfil requirements.

This tracker 2G GSM network and does not support 3G and 4G networks, but many 3G and 4G phone SIM cards have 2G GSM network supporting, this kind of 3G & 4G card can be used.

Directly open the top cover of the tracker case with finger, the SIM card slot & ON/OFF switch can seen, slide the top metal cover of the SIM card holder in the direction of OPEN to open the cover (slide down as shown below), and put the SIM card in the holder(see the card's anti-set direction as shown below). push & slide the metal cover to the LOCK direction to lock the SIM card.



SIM



Micro

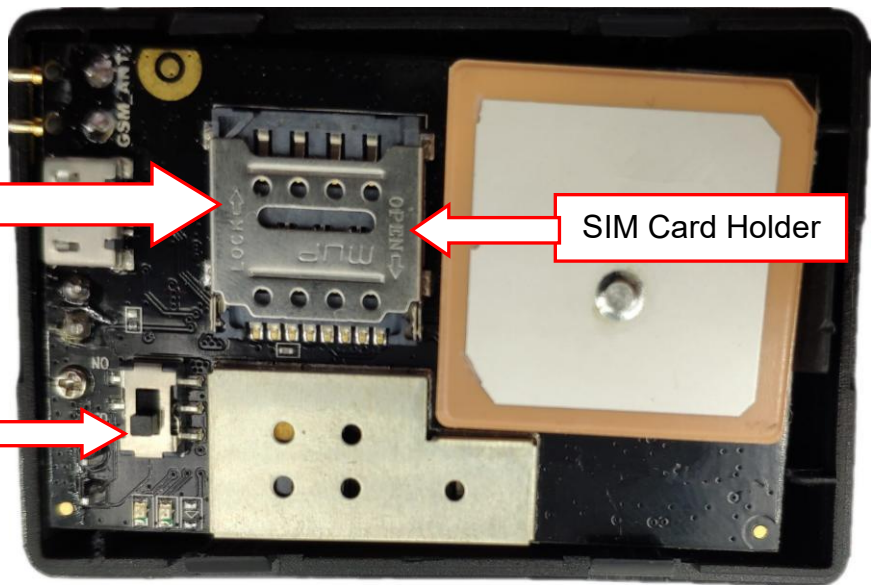


Nano



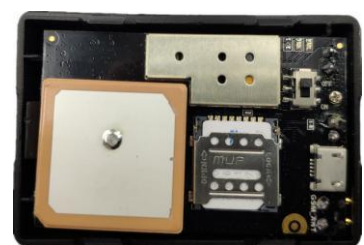
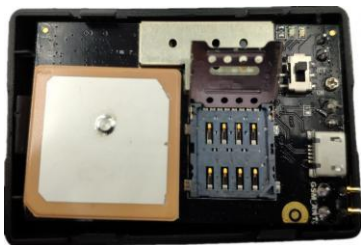
Directly open the top cover of the tracker case with finger, the SIM card slot & ON/OFF switch can seen

Slide the top metal cover of the SIM card holder to OPEN direction to release SIM card. push & slide the metal cover to the LOCK direction to lock the SIM card.



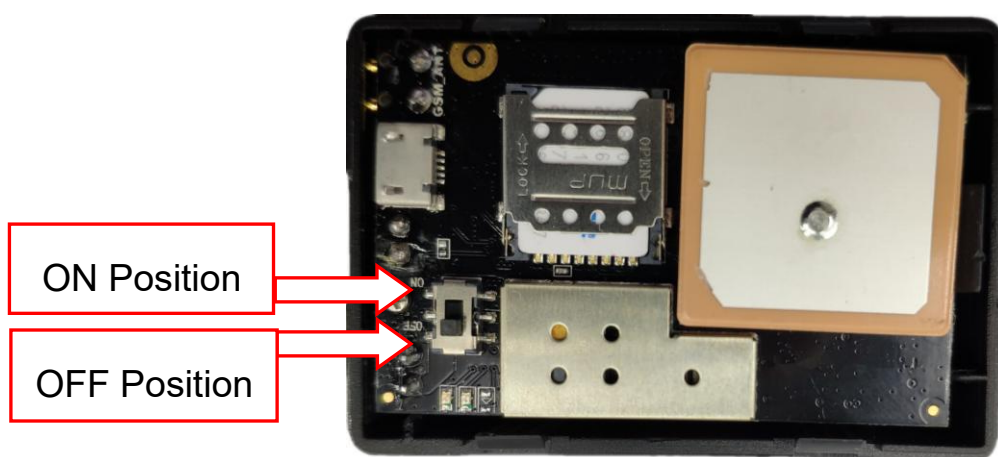
SIM Card Holder

ON/OFF Switch



3.2 ON/OFF

After open the top cover of the tracker case, switch the ON/OFF to ON position (Refer the following diagram slide UP), the device will power on and begin to work, slide the ON/OFF switch to OFF position, the device will power off. We recommended the first time testing in the open air outdoor.



After power on the tracker will begin to work, the LED light will flash, first close the shell, put the tracker outside, after 5-10 minutes, see if the position of the tracker is updated, if the position has been updated, it means the tracker is normal.

The GPS tracker will automatically shut down and sleep after 3 minutes working, and then 24 hours later (the interval can be changed by SMS) , the tracker will weak up again, locate the tracker & upload the location to server, and 3 minutes later, the tracker will go to sleep again, waiting another 24 hours later weak up, it will automatically start working and sleep with the setting interval time (default is 24 hours).

3.3 Installation Location

The tracker can be placed in a concealed place in the car. The tracker has a built-in GSM antenna and a GPS antenna. The GPS antenna surface cannot be facing the ground or the metal surface. Keep the tracker away from the large metal surface. It is recommended to install it in front/ Under the rear windshield, in the A/B/C column, under the center console, glove box, under the car floor carpet, under the seat, inside the seat, inside the lampshade, inside the door trim panel, etc..

After installation, Be careful to test the locate function is well. If tracker doesn't work, please find another place to test it again.



3.4 Battery:

The tracker uses CR123A lithium manganese long-life low-consumption battery (1500mAh/section, up to 3 knots), non-rechargeable battery, battery voltage is limited to 3.6V, other models or excessive voltage may

damage the device (note that the battery is once Battery, non-rechargeable battery, can not be charged).

For the first time, if the battery is short of battery (less than 2.5V), the device will not work.

Modifying the working mode and working time has a great influence on the battery life. Please pay attention to replace the battery after modifying the working time.

3.5 LED Lights:

LED	Status
Red light	OFF:Power off
	ON:Working normally
Yellow light GSM	OFF:GSM off
	ON:GPRS Working normally
	Blink(2times/sec):Searching for GSM Signal
Blue light GPS	OFF:GPS off
	ON:GPS Working
	Blink(2times/sec):Searching for GPS Signal

3.6 Light Sensor Alarm:

The light sensor on the tracker will automatically start working once when the device is turned to the bright place or when it is turned to the dark place, and send an alarm message to the platform to warn the owner that the device may be moved or removed.

4. Simply Using Step:

4.1 First to buy a 2G GSM phone SIM card, the SIM card need enable the internet visiting, monthly data cost is less than 2M, recommended order a data plan.

4.2 Open the case top cover, install SIM card, and slide the ON/OFF switch to ON position to power on the tracker.

4.3 Check if the LED indicator shows the right signal. Yellow and Blue led indicators ON means working well.(Please refer to LED indicator)

4.4 Some SIM card need set APN and internet user name & password to visit internet for upload location to server, send SMS to tracker can set the APN and internet user name & password, please call your sim card provider to get the APN and GPRS user name & password, set APN command "apn123456 apnname"(there is a blank between 123456 and apnname), set internet user name command "apnuser123456 username"(there is a blank between 123456 and username), set internet password command "apnpasswd123456 password"(there is a blank between 123456 and password).

4.5 After complete the setting, slide the ON/OFF switch to OFF and ON position again to repower on the tracker, the tracker will begin to work, after locating the tracker will turn off automatically 3 minutes later.

4.6 Visit the website www.999gps.net, logon with given user name and password (user name is the last 6 digital number of the tracker's ID number, the default password is same with user name or is 123456, for example ID is 1451217388, the default logon name is 217388, password is 217388 or 123456, the ID is print on the label on the back of the device, user can change the password and user information after logon, after logon, click the car you want check, the current location will display on the Google map, check the date and time and location is right or not, if it is correct, then installed the tracker in properly place, and repower on again to confirm the new installation place can work well.

4.7 The login account and Password for Android iPhone app are the same to the account for the tracking website. www.999gps.net . Visit website <http://d.999gps.net> can download the Apps or product manuals.

4.8 Fleet user can be created for easy fleet management, contact distributor can create fleet user.

5. Tracker Parameter Setting:

5.1 Set the alarm phone number:

The tracker can set the alarm phone number. When there is a alarm information, the alarm phone number can be notified by SMS, and send SMS "101 # phonenumber #" to the tracker can set the alarm phone number, where "101" is a fixed command; "phonenumber" is the alarm phone number to receive the alarm message, the newly set phone number will overwrite the old set number.

Note: If the M2M SIM card is used, there is no SMS and voice function, the alarm information can only be sent to the platform. The alarm phone number does not need to be set.

5.2 Set the upload time and interval:

By default, the tracker works once every 24 hours according to the first boot time, once every 3 minutes, uploads the location information, and then automatically enters the sleep shutdown state. If you can receive the GPS signal, upload the GPS location. If the signal is not received, upload the LBS. Base station location.

The uploading time and interval can be modified, send SMS message "WThh,aabb,ccdd" to the tracker number, where "WT" is a fixed command; "hh" is the tracker working time interval, the unit is hour, "aabb" is the start work time. The time is aa:bb (24-hour clock), and the current time is cc:dd (24-hour clock). After the operation is successful, the system will reply the message "OK".

For Example: SMS message "WT24,1201,1618", "WT" is a fixed command; "24" is the tracker working time interval, the unit is hour, "1201" means 12:01 start work, and "1618" means the current time is 16:18 (24-hour clock).

Please note: If the tracker is in the sleep state when the SMS is set, the SMS will be set to the new upload

time and interval when the GPS tracker wakes up. Note that the current time setting may not be correct. The time should now be the time that the GPS location wakes up, or the setup is done at power up.

5.3 Set extra long or short upload time interval:

By default, the tracker works once every 24 hours according to the first boot time, once every 3 minutes, uploads the location information, and then automatically enters the sleep shutdown state. If you can receive the GPS signal, upload the GPS location. If the signal is not received, upload the LBS. Base station location.

The uploading time and interval can be modified to extra long or short, send SMS message "WS hhhh mm, aabb, ccdd" to the tracker number, where "WS" is a fixed command; "hhhh" is the tracker working time interval, the unit is hour, max is 9999, "mm" is the tracker working time interval, the unit is minutes, max is 59, "aabb" is the start work time. The time is aa:bb (24-hour clock), and the current time is cc:dd (24-hour clock). After the operation is successful, the system will reply the message "OK".

For Example: SMS message "WS000020,1201,1618", "WS" is a fixed command; "24" is the tracker working time interval, the unit is hour, "1201" means 12:01 start work, and "1618" means the current time is 16:18 (24-hour clock).

Please note: If the tracker is in the sleep state when the SMS is set, the SMS will be set to the new upload time and interval when the GPS tracker wakes up. Note that the current time setting may not be correct. The time should now be the time that the GPS location wakes up, or the setup is done at power up.

5.4 Set Continuously Working Time (Real tracking car mode):

By default, the tracker defaults to waking up for 3 minutes each time, and then automatically enters the sleep power off state. The continuous working time can be modified by the following SMS command, and the SMS message "DWmmm" is sent to the tracker number, where "DW" is a fixed command; "mmm" is The continuous working time of the tracker, unit is minutes, maximum is 300 minutes. "DW000" is continuous operation and does not sleep, and the system will reply "OK" after successful operation.

For example: the SMS message "DW005", where "DW" is a fixed command; "005" is The continuous working time of the tracker is 5 minutes.

Note:

1. If the tracker is in the sleep power off state, the SMS command will be active after the GPS tracker wakes up.

2. Modifying the working time will have a very large impact on the battery life, especially after changing to continuous operation without sleeping, the battery life may only be a few days, please pay attention to replace the battery.

5.5 Set SIM card GPRS Internet access APN (access point):

The tracker needs GPRS to send location information to the network server. When GPRS accesses the Internet, most foreign phones need to set APN (access point) to access the Internet. Some need to set the GPRS Internet access username and password. (APN) and user name and password, please call the SIM card phone company to confirm or go to the official website to obtain, such as China Mobile APN: CMNET, no user name and password.

Send the message "apn123456 Apnname" to the tracker number, where "apn" is the fixed command; "123456" is the tracker password, "Apnname" is the SIM access point (APN) name, and the system will reply the message "apn after successful operation". OK".

Send the text message "apnuser123456 username" to the tracker number to set the username and password for GPRS Internet access, where "apnuser" is a fixed command; "123456" is the tracker password, and "username" is the user name of the SIM card. After successful operation, the system will Reply to the message "apnuser ok".

Send SMS "apnpasswd123456 password" to the tracker number to set the GPRS Internet access username and password, where "apnpasswd" is a fixed command; "123456" is the tracker password, and "password" is the password for the SIM card. After the operation is successful, the system will reply. SMS "apnpassword OK".

Note: When the device is powered on, it will automatically obtain the APN data of most operators' online access. It does not need to be set manually. If the operator's APN data is incorrect, you need to manually set the APN or GPRS user name and password. You only need to set it once. It is assumed that unless the device is factory reset, there is no need to set up an APN in China to access the Internet.

5.6 Check tracker parameters and settings

When the terminal works abnormally, you can send a text message to check the parameter settings and working status of the tracker. Use the bound phone number to send the SMS command "CXZT" to the tracker number. The "CXZT" is a fixed command. After the operation is successful, the tracker will reply to the internal parameters of the current tracker for the user to check and check the fault. The example of the reply message is as follows:

```
XM_GT25B_SW_10.1 2019/04/04 ID:9171004056 IP:58.64.155.133 8011 BAT:3 APN:CMNET
mode:C UP:15-13 GPS:V-2-0 GSM:13 ICCID:898602E6191680055439

XM_GT25B_SW_10.1 2019/04/04      : Software version
ID:9171004056                    : ID number
IP:58.64.155.133 8011            : Server IP
BAT:3                            : Battery voltage
APN:CMNET                        : APN name
```


mode:C	: Working mode
GPS:V-2-0	: GPS signal
GSM:13	: GSM signal
ICCID:898602E6191680055439	: SIM card ICCID number

6. Tracking platform instruction

The platform operation please refer the platform operation guide, scan the following QR code or click the website link to download the platform manual, visit website <http://d.999gps.net> and click the Platform Manual also can read online & download the platform manual.



7. Trouble Shooting

After the terminal is installed, it cannot connect to the background server, and the background display is not online or offline.

Please check the terminal installation:

1. Is the tracker turned on? Is the battery powered (the battery voltage must be greater than 2.5 volts on first power-up)?
2. Is the SIM installed correctly, is there a fee, is the GPRS function enabled, can the SIM card be online?
3. Does APN need to be set, is the setting correct?
4. Query parameter settings. Check if the device serial number and background service platform URL are consistent with the tracker?
5. The terminal installation position must be in the place where there is no metal shielding or the signal shielding. Otherwise, the GPS and GSM signals have a great influence, and the network connection is unsuccessful, the locating accuracy is lowered and the locating time is long.

Specification:

Working voltage	3V DC	GSM frequency	850/900/1800/1900 MHz
GPS Channels	24	GSM /GPS Antenna	Inbuilt
GPS Accuracy	10-20M	LBS Locate Accuracy	50-500M
Current	<1uA /3V	Battery	4500mAh (3xCR123A)
Hot Start Time	1-2s	Cold Start Time	36s
Normal Working Temp	-20 ~+55℃	Working Temp	-35~+70℃

Storage Temp	-40~80℃		
--------------	---------	--	--

Packing list:

Tracker	1 PC	
Manual Card	1 PC	
CR123A Battery	3 PCS	Built in
Magnet Board	1 Sets	Optional

Main Case Dimension: 62x42x28mm(Not including magnet board)
62x42x32mm(With magnet board)

Tracker Weight: 95g(Not including magnet board)
120g(With magnet board)

Pack Weight: 150g(Not including magnet board)
175g(With magnet board)

Pack Dimension: 105x70x43mm

Carton Dimension: 490x440x290mm

Warranty book

This product undergoes strict quality inspection before leaving the factory to ensure reliable performance and stable operation under high temperature and low temperature conditions. This product has been repaired under normal use within the next year from the date of sale. It will be repaired free of charge with this certificate, but the following consumables are not included in the scope of warranty, and material fees are required:

1. Destructive damage caused by improper installation and use
2. Damage caused by unauthorized removal or modification
3. The machine is damaged or the parts are missing.
4. Fuse, battery, wire, charger and other consumable parts.

Note: This product is only a vehicle-assisted safety device, which can improve the safety performance of the car, but it is not a substitute for commercial insurance. The company is not responsible for any economic loss or injury caused by improper installation or use.

Name		Contact Number	
Device SIM Card Number		Tracker ID	
Model No.	CCTR-807 <input checked="" type="checkbox"/>	Warranty	<input type="checkbox"/> 1Year <input type="checkbox"/> 2Year <input type="checkbox"/> 3Year <input type="checkbox"/> 5Year <input type="checkbox"/> Life time
Purchase Date	Year Month Date		
Distributor	The service period is subject to the platform display. If it does not match the confirmation at the time of purchase, please contact the dealer for confirmation and change.		

Note: The company has the final interpretation right of this manual, and will be subject to minor changes without prior notice. Please contact us or the dealer for details.